

**BODY LINE**

Inspiring Fitness

**VIVA**<sup>®</sup>  
FITNESS

#PushYourself



THOUGHTS  
BECOME  
THINGS

[www.vivafitness.net](http://www.vivafitness.net)

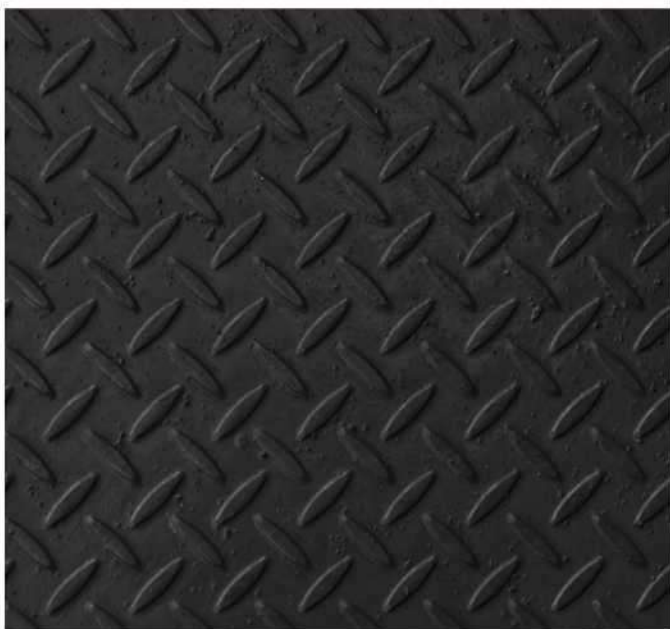


'Thoughts become things' when you leave the realm of average thinking and follow your dreams by applying the right decision, driven by your mind. Fitness is a 'state of mind', which needs constant trigger to put ones thought into action.

Every action needs a reason for accomplishing it. Staying fit manifests in the physicality and inner well-being which everyone aspires. Every time you make a resolve and step-up your fitness goals, life gets the better of you and positive thoughts lead to positive outcomes.

VIVA Fitness is an accomplished brand in the world of fitness equipment, designed both for commercial and home use. It thrives on the belief that with the right set of tools, a fitter person is better off in accomplishing his personal and professional goals.







## Q7i Commercial Treadmill

### Specifications

- 15.6" HD TFT Screen with different landscape programs.
- Supports Wi-Fi connection & web browsing.
- AC driving system with adjustable variable frequency.
- 4.5 HP AC continuous (9.0 HP Peak) external roto motor, high heat dissipation performance.
- 24"x63" running surface.
- Speed 1-22kmph.
- Precise incline control from 0-15%.
- Inducing key-press, with direct speed (3/6/9) & incline (3/6/9) on the TFT screen.
- Various motivating programs for different workout requirements.
- With USB & audio interface.
- With wireless charger.
- Sweat proof console design.
- Large sized twin cup holder.
- Emergency stop button.
- Extra heavy duty running board supporting structure.
- Heavy duty reliable orthopaedic running belt.
- With durable Japanese bearing in rollers.
- Maximum user weight: 180kg.
- LXWXH : 210×93×161 CM.



## Q5i Commercial Treadmill

### Specifications

- 15.6" HD TFT Screen with different landscape programs.
- Supports Wi-Fi connection & web browsing.
- AC driving system with adjustable variable frequency
- 4.0 HP AC continuous (8.0 HP Peak) external roto motor, high heat dissipation performance
- 23.6" x 63" (60"160cm) running surface
- Speed 1-22kmph
- Precise incline control from 0-15%
- Inducing key-press, with direct speed (3/6/9) & incline(3/6/9) on the TFT screen
- Various motivating programs for different workout requirements: quick start/ real scene mode (6) / target mode (3) / training mode (5) / HRC mode
- With USB & audio interface
- With wireless charger
- Sweat proof console design
- Large sized, twin cup holder to hold your mobile phone
- Emergency stop button
- Extra heavy duty running board supporting structure
- Heavy duty reliable orthopaedic running belt
- Maximum user weight : 180kg
- LXWXH : 210×93×161 cm

# X10

## Commercial Treadmill

### Specifications

- AC driving system with adjustable variable frequency.
- 4.0 HP AC continuous (8.0 HP Peak) motor.
- 23" x 62" running surface.
- Speed 0.8~20 kmph.
- Precise incline control from 0~18%
- **With cordless mobile charger.**
- 5 LED display with dot matrix showing time, speed, distance, incline, calories, heart rate, steps, pace & average speed .
- Direct speed & incline keys on the console.
- Various motivating programs for different workout requirements.
- Extra heavy duty steel base with double cell neoprene rubber system for excellent suspension.
- 1" thick fibre board running deck.
- Heavy duty reliable orthopaedic running belt.
- Large sized, twin cup holder with a built in tray to hold your mobile phone,
- With USB charging point.
- High speed O<sup>2</sup> generator.
- Emergency stop button.
- Sweat proof console design.
- Maximum user weight: 160 kg.
- LXWXH : 209X88X163 CM



# Q3i

## Commercial Treadmill

### Specifications

- **15.6" HD TFT Screen with different landscape programs.**
- **Supports Wi-Fi connection & web browsing.**
- AC driving system with adjustable variable frequency
- 3.0HP AC continuous (6.0HP Peak) external roto motor with high hear performance
- 22.44" x 59" running surface.Speed:1-20km/h
- Precise incline control from 0-15%
- Including key-press, with direct speed (3/6/9) & incline(3/6/9) on the TFT screen
- Various motivating programs for different workout requirements: quick start/ real scene mode (6) / target mode (3) / training mode (5) / HRC mode
- With USB & audio interface
- **With wireless charger**
- Sweat proof console design
- Large sized, twin cup holder to hold your mobile phone
- Emergency stop button
- Extra heavy duty running board supporting structure
- Durable Japanese bearing used in roller
- Max user weight : 150kg
- LXWXH : 197x93x145 cm





## Q7 Commercial Treadmill

### Specifications

- AC driving system with adjustable variable frequency.
- 4.5 HP AC continuous (9.0 HP Peak) external roto motor, high heat dissipation performance.
- 24" x 63" running surface.
- Speed 1-22kmph.
- Precise incline control from 0-15%.
- 7 LED+dot matrix display showing time, incline, speed, pace, calorie, distance, heart rate, step, METS & temperature.
- Medical grade silicon keys with direct speed (3/6/9) & incline (4/8/12) on the console.
- Various motivating programs for different workout requirements.
- With USB & audio interface, USB can be used for charging.
- Sweat proof console design.
- Large sized twin cup holder.
- Emergency stop button.
- Extra heavy duty running board supporting structure.
- Heavy duty reliable orthopaedic running belt.
- With durable Japanese bearing in rollers.
- Maximum user weight: 180kg.
- LXWXH: 210×93×161 CM.

## T-1919 Commercial Treadmill

### Specifications

- AC driving system provides higher torque of power for heavy loading
- 3.5 HP AC continuous (7.0 HP Peak) motor
- 23.6" x 63" running surface
- Speed 1~22 kmph
- Precise incline control from 0~15%
- Clear & luxurious design, 6 window LED display showing time, speed, incline, calories, distance, program & heart rate
- Various motivating programs for different workout requirements
- 6 PCS rubber cushion for excellent shock absorption that provides suitable push off to reduce the possibility of most of injury to knees and joints
- Heavy duty 2.5mm reliable orthopedic running belt
- MP3 connected with speakers, blue tooth music and Fit show App
- Sweat proof console design
- Two cup / bottle holders
- Maximum User Weight: 180 kgs
- LXWXH : 201X92X159 CM.





## Q5 Commercial Treadmill



### Specifications

- AC driving system with adjustable variable frequency.
- 4.0 HP AC continuous (8.0 HP Peak) external roto motor with high heat performance.
- 23.6" x 63" running surface.
- Speed : 1-22 kmph.
- Precise incline control from 0-15%.
- 6LED+dot matrix display showing time, incline, calorie, distance and heart rate.
- Medical grade silicon keys with direct speed (3/6/9) & incline (4/8/12) on the console.
- Various motivating programs for different workout requirements: HRC, custom, manual, hill, fat burn, target, cardio, strength, fit test etc.
- Bluetooth music play.
- Sweat proof console design.
- Large sized, twin cup holder with a built-in tray to hold your mobile phone / tablet.
- Emergency stop button.
- Extra heavy duty running board supporting structure.
- Heavy duty reliable orthopaedic running belt.
- Maximum user weight : 180kg.
- LXWXH : 210×93×161 CM.

## X8 Commercial Treadmill



### Specifications

- AC driving system with adjustable variable frequency.
- 3.0 HP AC continuous (6.0 HP Peak) motor.
- Speed : 1~20 kmph.
- Precise incline control from 0 ~15%.
- 21" x 58" running surface.
- Multi window display showing time, speed, distance, incline, calories & heart rate.
- Direct speed & incline keys on the console.
- Various motivating programs for different workout requirements.
- Double phenolic heavy cushioned deck for excellent shock absorption that provides suitable push off to reduce the possibility of any type of injury to knees and joints.
- Heavy duty reliable orthopedic running belt.
- Emergency stop button.
- Sweat proof console design.
- Two Mobile/Bottle Holders.
- Maximum User Weight : 150 Kgs.
- LXWXH : 216X92X151 CM.



## Q3

### Light Commercial Treadmill

#### Specifications

- AC driving system with adjustable variable frequency.
- 3.0HP AC continuous (6.0HP Peak) external rotor motor with high hear performance.
- 22.44" x 59" running surface.
- Speed:1-20km/h.
- Precise incline control from 0-15%.
- 5 LED+dot matrix display showing time, incline, speed, calorie, distance, heart rate and step.
- Medical grade silicon keys with direct speed (3/6/9) & incline(4/8/12) on the console.
- Various motivating programs for different workout requirements: 4HRC, 18 preset, 1 manual, 1 fit test.
- Sweat proof console design.
- Large sized, twin cup holder with a built in tray to hold your mobile phone & tablet PC.
- Emergency stop button.
- Extra heavy duty running board supporting structure.
- Durable Japanese bearing used in roller.
- Max user weight: 150 kg.
- LXWXH: 197×93×145 cm.



## T-940

### Light Commercial Treadmill

#### Specifications

- For light commercial and high end home use.
- 6 HP powerful AC Grade motor (3 HP continuous).
- Large LCD screen with blue back light.
- 24 preset programs, 1 manual and 3 user's manual.
- Speed : 1 ~ 24 kmph.
- Incline : 0 ~ 20%.
- Running surface : 23 x 60 inches.
- Readout : time, speed, distance, incline, calories and program.
- Mp3 system.
- Built in speakers.
- 8 piece high class suspension shock absorbing deck that protects the joints from injury and provide a good feeling while running.
- Heavy duty running belt.
- Maximum User Weight: 130 kg.







## T-910 Motorized Treadmill

### Specifications

- For high end home use.
- 4 HP powerful AC motor (2 HP continuous).
- Speed :- 1 ~ 20 kmph.
- Incline : 0 ~15%.
- Running surface : 20 x 60 inches.
- 7" large LCD window that readouts : time, speed, distance, incline, calories and programs.
- Various workout programs to meet different user requirements.
- Instant speed and incline keys.
- Speakers to connect with Mp3 or Ipod.
- Innovative cushioning system.
- Heavy duty running belt.
- Cylinder provide hand free deck folding system.
- Easily foldable.
- Maximum User Weight 130 Kgs.



## T-909 Motorized Treadmill

### Specifications

- For high end home use
- 5 HP powerful AC motor (2.5 HP continuous)
- Speed Range : 1~20 kmph
- Power Incline : 0~15%
- Running surface : 20 x 60 inches
- 5" LCD window that readout : time, speed, distance, incline, calories & pulse
- Various workout programs, each is designed by certified personal trainers to help you run faster, loose weight & keep toned.
- Instant speed & incline keys on console
- Advance cushioning technology function.
- Heavy duty running belt
- MP3 with speaker
- Wheels for easy transportation
- Cylinder provides hand free deck folding system
- Easily foldable
- Maximum User Weight : 130 Kgs

## T-906 Motorized Treadmill

### Specifications

- 5HP powerful AC motor (2.5HP continuous).
- Speed Range : 1.0~20 kmph.
- Power Incline : 0-20%.
- Running Surface : 20x55 inches.
- Display : LED display with 5 windows
- Readout : Time, speed, incline, distance, calories & pulse.
- Various workout programs, each is designed by certified personal trainers to help you run faster, loose weight and keep toned.
- Instant speed and incline keys on console.
- Heavy duty running belt.
- MP3 & USB function with speaker.
- Wheels for easy transportation.
- Cylinder provides hand free deck folding system.
- Easily foldable.
- Maximum User Weight : 140Kgs.



## T-445 Motorized Treadmill

### Specifications

- 4.0 HP powerful AC motor (2.0 HP continuous)
- Speed Range : 1~18 kmph
- Power Incline : 0 ~ 18%
- Running surface : 19" x 54"
- Display : Large LCD blue back light
- Readout : time, speed, distance, incline, calories & pulse
- Various workout programs, each is designed by certified personal trainers to help you run faster, loose weight & keep toned.
- Instant speed & incline keys on console
- Innovative cushioning system
- Heavy duty running belt
- MP3 & USB function with speaker
- With built-in fan
- Wheels for easy transportation
- Cylinder provides hand free deck folding system
- Easily foldable
- Maximum User Weight : 130 Kgs





## T-905 Motorized Treadmill

### Specifications

- 5 HP powerful AC motor (2.5 HP continuous)
- Speed Range : 1~18 kmph
- Power Incline : 0~18%
- Running surface : 20 x 59 inches
- Display : Large LCD blue back light
- Readout : time, speed, distance, incline, calories & pulse
- Various workout programs, each is designed by certified personal trainers to help you run faster, loose weight & keep toned.
- Instant speed & incline keys on console
- Innovative cushioning system
- Heavy duty running belt
- MP3 & USB function with speaker
- Wheels for easy transportation
- Cylinder provides hand free deck folding system
- Easily foldable
- Maximum User Weight : 130 Kgs



## T-755 Motorized Treadmill

### Specifications

- 4 HP powerful AC motor (2 HP continuous).
- Speed Range : 1 – 18 kmph.
- Power Incline : 0 ~ 18%.
- Running Surface : 18 x 55 inches.
- Display : large LCD blue back light.
- Readout : time, speed, distance, incline, calories & pulse.
- Various workout programs, each is designed by certified . personal trainers to help you run faster, loose weight and keep toned.
- Instant speed and incline keys on console.
- Innovative cushioning system.
- Heavy duty running belt.
- MP3 & USB function with speaker.
- Wheels for easy transportation.
- Cylinder provides hand free deck folding system.
- Easily foldable.
- Maximum User Weight 130 Kgs.

## T-902 Motorized Treadmill

### Specifications

- 5HP powerful AC motor (2.5HP continuous).
- Speed Range:1.0-20kmph. Power Incline:0-18%.
- Running Surface:18x55 inches.
- Display:LED display with 4 windows
- Readout:Time,speed,incline,distance,calories & pulse.
- Various workout programs,each is designed by certified personal trainers to help you rum faster,loose weight and keep toned.
- Instant speed and incline keys on console.
- Heavy duty running belt.
- MP3 & USB function with speaker.
- Wheels for easy transportation.
- Cylinder provides hand free deck folding system.
- Easily foldable.
- Maximum User Weight:140Kgs.



## T-752 Motorized Treadmill

### Specifications

- 4.0 HP powerful AC motor (2.0 HP continuous)
- Speed Range : 1~18 kmph
- Power Incline : 0 ~ 18%
- Running surface : 19x56 inches
- Display : Large LCD blue back light
- Readout : time, speed, distance, incline, calories & pulse
- Various workout programs, each is designed by certified personal trainers to help you run faster, loose weight & keep toned.
- Instant speed & incline keys on console
- Innovative cushioning system
- Heavy duty running belt
- MP3 function with speaker
- Wheels for easy transportation
- Cylinder provides hand free deck folding system
- Easily foldable
- Maximum User Weight : 120 Kgs





## T-60 Motorized Treadmill

### Specifications

- 4.5 HP powerful AC motor (2.25 HP continuous)
- Speed Range : 1~16 kmph
- Power Incline : 0 ~ 15%
- Running surface : 18×52 inches
- Display : Large LCD blue back light
- Readout : time, speed, distance, incline, calories & pulse
- Various workout programs, each is designed by certified personal trainers to help you run faster, loose weight & keep toned.
- Instant speed & incline keys on console
- Innovative cushioning system
- Heavy duty running belt
- MP3 function with speaker
- Wheels for easy transportation
- Cylinder provides hand free deck folding system
- Easily foldable
- Maximum User Weight : 120 Kgs



## T-52 Motorized Treadmill

### Specifications

- For high end home use
- 4.0 HP powerful AC motor (2.0 HP continuous)
- Speed Range : 0.1~16 kmph
- Power Incline: 1 ~ 15%
- Running surface : 18×52 inches
- Display : 5 inch LCD screen
- Readout : time, speed, distance, incline, calories & pulse
- Various workout programs, each is designed by certified personal trainers to help you run faster, loose weight & keep toned.
- Instant speed & incline keys on console
- Innovative cushioning system
- Heavy duty running belt
- MP3 function with speaker
- Wheels for easy transportation
- Cylinder provides hand free deck folding system
- Easily foldable
- Maximum User Weight : 120 Kgs



## T-51 Motorized Treadmill

### Specifications

- 4 HP powerful AC motor (2 HP continuous)
- Speed Range : 1~16 kmph
- 3 levels manual incline
- Running surface : 18" x 52"
- Display : 5" LCD screen
- Readout : time, speed, distance, incline, calories & pulse
- Various workout programs, each is designed by certified personal trainers to help you run faster, loose weight & keep toned.
- Instant speed key on console
- Innovative cushioning system
- Heavy duty running belt
- Speakers to connect with MP3
- Wheels for easy transportation
- Cylinder provides hand free deck folding system
- Easily foldable
- Maximum User Weight : 120 Kgs



## T-99 Motorized Treadmill

### Specifications

- 3 HP powerful AC motor (1.5 HP continuous).
- Speed Range : 1 – 14 kmph.
- 3 level manual incline.
- Running Surface : 17 x 48 inches.
- Display : LCD blue back light.
- Readout : time, speed, distance, incline, calories & pulse
- Various workout programs, each is designed by certified personal trainers to help you run faster, loose weight and keep toned.
- Instant speed key on console.
- Innovative cushioning system.
- Heavy duty running belt.
- MP3 & USB function with speaker.
- Wheels for easy transportation.
- Cylinder provides hand free deck folding system.
- Easily foldable.
- Maximum User Weight 100 Kgs.



## T-810 Motorized Treadmill

### ► Specifications

- DC Motor : 6 HP peak duty (3 HP continuous)
- Speed Range : 1 ~ 20 kmph
- Running surface : 20 x 60 inches
- Power incline : 0 ~ 15%
- Display : 1 large LCD window
- Programs : 12 programs with body fat tester
- Readout : speed, time, calories, distance, incline and pulse
- Speakers to connect with Mp3 or Ipod
- Speed and incline switch button on the handle bar
- Emergency stop button
- Wheels for transportation
- Heavy duty running belt
- Large cup holders
- Cylinder provide hand free deck folding down
- Foldable with locking system
- Easy installation
- Maximum User Weight 130 Kgs



## T-440 Motorized Treadmill

### ► Specifications

- DC Motor : 5 HP peak duty (2.5 HP continuous)
- Speed Range : 1 ~ 18 kmph
- Incline : 0 ~ 18%
- Running surface : 19 x 54 inches
- Display : Large LCD blue back light
- Readout : time, speed, distance, incline, calories & pulse
- Various workout programs, each is designed by certified personal trainers to help you run faster, loose weight & keep toned.
- MP3 & USB function with speaker
- With built-in fan
- Emergency stop button
- Wheels for transportation
- Heavy duty running belt
- Cylinder provide hand free deck folding down
- Foldable with locking system
- Easy installation
- Maximum User Weight 120 Kgs

## T-425 Motorized Treadmill

### Specifications

- DC Motor : 4.5 HP peak duty (2.25 HP continuous)
- Speed Range : 1 ~ 16 kmph
- Incline : 0 ~ 18%
- Running surface : 18 x 53 inches
- Display : 1 large LCD window
- Readout : time, speed, distance, incline, calories & pulse
- Various workout programs, each is designed by certified personal trainers to help you run faster, loose weight & keep toned.
- MP3 & USB function with speaker
- With built-in fan
- Emergency stop button
- Wheels for transportation
- Heavy duty running belt
- Large cup holders
- Cylinder provide hand free deck folding down
- Foldable with locking system
- Easy Installation
- Maximum User Weight: 120 Kgs



## T-255 Motorized Treadmill

### Specifications

- DC Motor : 5 HP peak duty (2.5 HP continuous).
- Speed Range : 1 ~ 18kmph.
- Incline : 0 ~ 15%.
- Running surface : 18 x 56 inches.
- Display : 5" large LCD.
- Programs : 14 Programs with body fat tester.
- Readout : speed, time, body fat, calories, distance & pulse.
- Speakers to connect with MP3 or iPod.
- Speed and incline switch button on the handle bar.
- Emergency stop button.
- Wheels for transportation.
- Heavy duty running belt.
- Large cup holders.
- Cylinder provide hand free deck folding down.
- Foldable with locking system.
- Easy Installation.
- Maximum User Weight: 120 Kgs.







## T-245 Motorized Treadmill

### ► Specifications

- DC Motor : 4.5 HP peak duty (2.25 HP continuous).
- Speed Range : 1 ~ 18 kmph.
- Incline : 0 ~ 15%.
- Running surface : 17 x 51 inches.
- Display : 5 large LCD window.
- Programs : 12 Programs with body fat tester.
- Readout : speed, time, body fat, calories, distance & pulse.
- Speakers to connect with MP3 or iPod.
- Speed and incline switch button on the handle bar.
- Emergency stop button.
- Wheels for transportation.
- Innovative cushioning system
- Heavy duty running belt.
- Large cup holders.
- Cylinder provide hand free deck folding down.
- Foldable with locking system.
- Easy Installation.
- Maximum User Weight: 115 Kgs.



## T146 Motorized Treadmill

### ► Specifications

- DC Motor : 4.5 HP peak duty (2.25 HP continuous)
- Speed Range : 1 ~ 16 kmph
- Incline : 0 ~ 15%
- Running surface : 18 x 52 inches
- Display : 1 large LCD window
- Various workout programs, each is designed by certified personal trainers to help you run faster, loose weight & keep toned.
- Readout : speed, time, body fat, calories, distance & pulse
- Speakers to connect with MP3
- Speed and incline switch button on the handle bar
- Emergency stop button
- Wheels for transportation
- Heavy duty running belt
- Large cup holders
- Cylinder provide hand free deck folding down
- Foldable with locking system
- Easy Installation
- Maximum User Weight: 115 Kgs

## T-240 Motorized Treadmill

### Specifications

- DC Motor: 4.5 HP peak duty (2.25 HP continuous).
- Speed Range: 1 ~ 16 kmph.
- Incline : 0 ~ 15%.
- Running surface 17 x 51 inches.
- Display: 1 large LCD window.
- Programs: 12 Programs with body fat tester.
- Readout : speed, time, calories, distance, incline & pulse.
- Speakers to connect with MP3 or iPod.
- Speed and incline switch button on the handle bar.
- Emergency stop button.
- Wheels for transportation.
- Heavy duty running belt.
- Large cup holders.
- Cylinder provide hand free deck folding down.
- Foldable with locking system.
- Easy Installation.
- Maximum User Weight 115 Kgs.



## T-406 Motorized Treadmill

### Specifications

- DC Motor : 3.5 HP peak duty (1.75 HP continuous)
- Speed Range : 1 ~ 14 kmph.
- Incline : 0~15%.
- Running surface : 17 x 50 inches
- Display : 5" LCD screen with blue backlight
- Various workout programs which is designed by certified personal trainers.
- Readout : speed, time, calories, incline, distance & pulse.
- Speed & incline switch buttons on handle bars.
- Innovative cushion system.
- Emergency stop button.
- MP3 Function with speaker.
- Wheels for transportation.
- Heavy duty running belt.
- Large cup holders.
- Cylinder provide hand free deck folding down. Foldable with locking system.
- Easy Installation.
- Maximum User Weight: 100 Kgs





## T-471 Motorized Treadmill

### Specifications

- DC Motor : 3.5 HP peak duty (1.75 HP continuous)
- Speed Range : 0.8 ~ 14 kmph.
- Incline : 0~15%.
- Running surface : 16 x 48 inches
- Display : 5 large LCD window
- Programs : P1 ~ P9
- Readout : speed, time, calories, distance & pulse.
- Speakers to connect with Mp3 or Ipod.
- Speed switch buttons on handle bars.
- Emergency stop button.
- Wheels for transportation.
- Heavy duty running belt.
- Large cup holders.
- Cylinder provide hand free deck folding down.
- Foldable with locking system.
- Easy Installation.
- Maximum User Weight: 100 Kgs



## T-430 Motorized Treadmill

### Specifications

- DC Motor : 5 HP peak duty (2.5 HP continuous)
- Speed Range : 1 ~ 18 kmph
- Incline : 3 level manual
- Running surface : 19 x 54 inches
- Display : 1 large LCD window
- Readout : time, speed, distance, incline, calories & pulse
- Various workout programs, each is designed by certified personal trainers to help you run faster, loose weight & keep toned.
- MP3 & USB function with speaker
- With built-in fan
- Emergency stop button
- Wheels for transportation
- Heavy duty running belt
- Large cup holders
- Cylinder provide hand free deck folding down
- Foldable with locking system
- Easy Installation
- Maximum User Weight: 120 Kgs



## T-415 Motorized Treadmill

### Specifications

- DC Motor : 4.5 HP peak duty (2.25 HP continuous)
- Speed Range : 1 ~ 16 kmph
- Incline : 3 level manual
- Running surface : 18 x 53 inches
- Display : 1 large LCD window
- Readout : time, speed, distance, incline, calories & pulse  
Various workout programs, each is designed by certified personal trainers to help you run faster, loose weight & keep toned.
- MP3 & USB function with speaker
- With built-in fan
- Emergency stop button
- Wheels for transportation
- Heavy duty running belt
- Large cup holders
- Cylinder provide hand free deck folding down
- Foldable with locking system
- Easy Installation
- Maximum User Weight: 120 Kgs



## T-145 Motorized Treadmill

### Specifications

- DC Motor : 4.5 HP peak duty (2.25 HP continuous)
- Speed Range : 1 ~ 16 kmph
- Incline : 3 level manual
- Running surface : 18 x 52 inches
- Display : 1 large LCD window
- Various workout programs, each is designed by certified personal trainers to help you run faster, loose weight & keep toned.
- Readout : speed, time, body fat, calories, distance & pulse
- Speakers to connect with MP3
- Speed and incline switch button on the handle bar
- Emergency stop button
- Wheels for transportation
- Heavy duty running belt
- Large cup holders
- Cylinder provide hand free deck folding down
- Foldable with locking system
- Easy Installation
- Maximum User Weight: 115 Kgs



## T-131 Motorized Treadmill

### Specifications

- DC Motor : 4 HP peak duty (2 HP continuous)
- Speed range : 1~12 kmph
- Incline : 3 level manual
- Running surface 17 x 50 inches
- Display : 5 window led
- Programs : P1-P9 + body fat
- Readout : speed, time, distance, calories, body fat and pulse
- Speaker to connect with MP3
- Speed switch buttons on handle bar
- Emergency stop button
- Wheels for transportation
- Heavy duty running belt
- Large cup holders
- Cylinder provide hand free deck folding down
- Foldable with locking system
- Easy installation
- Maximum user weight 100 kgs



## T-470 Motorized Treadmill

### Specifications

- DC Motor : 3.5 HP peak duty (1.75 HP continuous).
- Speed Range : 0.8 ~ 14 kmph.
- Incline : 3 level manual.
- Running surface : 16 x 48 inches.
- Display : 5 large LCD window.
- Programs : P1 ~ P9.
- Readout : speed, time, calories, distance & pulse.
- Speakers to connect with Mp3 or Ipod.
- Speed switch buttons on handle bars.
- Emergency stop button.
- Wheels for transportation.
- Heavy duty running belt.
- Large cup holders.
- Cylinder provide hand free deck folding down.
- Foldable with locking system.
- Easy Installation.
- Maximum User Weight: 100 Kgs.

## E200

### Commercial Elliptical

#### Specifications

- LED dot matrix console readouts: TIME, DISTANCE, CALORIES, PULSE, SPEED / RPM, LEVEL, WATT, FAN etc.
- Various motivating programs for different workout requirements.
- Level Control : 24 resistance levels.
- Dual Technology - resistance with both magnetic and air.
- 520mm x 240mm unique stride length.
- 8 kgs flywheel.
- Both forward & reverse motions offer various workout options.
- Hand held pulse sensors enable to monitor the heart rate all times.
- With ipad holder & bottle cage.
- Unique durable floor levelers on front & rear stabilizer.
- Transport wheels on the front stabilizer, providing easy movement to move the items.
- With adaptor power system.
- Maximum user weight : 150 kg.
- LXWXH : 162X65X180 CM.



## KH-740

### Elliptical Cum Recumbent Bike

#### Specifications

- 10 kgs / 2 ways Magnetic fly wheel system.
- 20" long stride length.
- 32 levels auto Tension system.
- 7" Large LCD display for speed, time, distance, calories and pulse.
- Various motivating programs for different workout.
- With phone / tablet stand.
- Comfortable cushioned pedals.
- Handle bar with hand pulse.
- Assembled size: 1570\*950\*1280MM.
- Max. User Weight 125 Kgs.





## KH-595

### Light Commercial Elliptical

#### ► Specifications

- Front Drive with long handle arms enabling smooth and engaging exercise regardless your fitness level
- With 3 level manual incline
- 20" Long stride length for different user heights
- Auto scan advanced computer with blue back-lit screen
- Display Readouts : time, distance, RPM, speed, level, calories pulse & watts
- Magnetic brake with V-belt drive system
- With 7 kg flywheel
- With 3 pcs hidden crank system
- 16 levels tension control system
- Multiple programs, including 1 manual, 2 HRC, 1 body fat & 2 user set
- Hand held pulse sensor
- With adapter power system
- Transport wheels
- Adjustable floor levellers
- Maximum user weight : 130kgs
- LXWXH : 173X66X170 CM



## KH-610

### Light Commercial Elliptical

#### ► Specifications

- 20" long stride.
- 3 section manual incline.
- Blue backlight LCD display.
- Readouts: Time, speed, distance, calories, pulse, watt, program, bodyfat (height/weight/age) and level.
- Multiple programs including 1 Manual, 4 HRC, 1 Watt,
- 11 preset, 4 Users and 3 Fitness test.
- Handheld pulse sensor.
- Magnetic flywheel.
- With adapter power system.
- Resistance level - 24.
- Transport wheels.
- Adjustable floor levelers.
- Maximum User Weight: 130kgs.
- LXWXH : 176X68X179 CM

## KH-690

### Light Commercial Elliptical

#### Specifications

##### Drive

- Pull Motor System with poly V-belt.
- Resistance system : New Technology silent programmable magnetic resistance system.
- Resistance level : 32 levels.
- With adaptor power system.

##### Monitor

- Advance LCD display.
- Display readouts : Time, Distance, Speed, Level, Calories, Pulse & Watts.
- 10 programs.

##### Special Features

- With 4 level manual incline.
- Adjustable stride for ultimate workout.
- Both forward and reverse motions offer various workout options.
- Heavy -gauge, epoxy hybrid, steel frame.
- Low impact workout.
- Long stride & 9 kg of rotating flywheel ensures smooth & dynamic elliptical movement.
- Comfy over-sized, non-slip pedals.
- Handheld pulse sensors.
- Dual action handle bars with high density foam grips.
- Accessory tray & built-in reading rack.
- Transport wheels.
- Swift support.
- Bluetooth support.
- Adjustable floor levelers.
- Maximum User Weight : 150 Kgs.
- LXWXH : 165X63X170 CM.



## KH-580

### Light Commercial Elliptical

#### Specifications

- 18" long stride.
- Adjustable swing bar.
- LCD display readouts : Time, Distance, RPM, Speed, Calories, Pulse and Watts.
- Multiple programs including 1 Manual, 4 HRC, 3 Goal and 5 Users.
- Handheld pulse sensor.
- 30 cm fly wheel.
- Motor magnetic 24 level resistance.
- Transport wheels.
- Adjustable floor levelers.
- With adaptor power system.
- Maximum User Weight : 130 Kgs.





## **KH-965**

### Light Commercial Elliptical

#### ► Specifications

- 20" long stride length with 2 levels of adjustment.
- Adjustable swing bar.
- Display readouts : Time, Distance, RPM, Speed, Calories, Pulse, Body Ratio, BMI, BMR and Temperature.
- Various motivating programs for different workout requirements.
- Handheld pulse sensor.
- 10kgs flywheel.
- 15 level Magnetic resistance system.
- Transport wheels.
- Adjustable floor levelers.
- Maximum User Weight : 135 Kgs.



## **KH-960**

### Light Commercial Elliptical

#### ► Specifications

- 20" long stride length with 2 levels of adjustment.
- Adjustable swing bar.
- Display readouts : Time, Distance, RPM, Speed, Calories, Pulse, Body ratio, BMI, BMR and Temperature.
- Handheld pulse sensor.
- 10 kgs fly wheel.
- Magnetic 8 level manual tension control system.
- Transport wheels.
- Adjustable floor levelers.
- Maximum User Weight : 130 Kgs.





## **KH-813** Programable Magnetic Elliptical

### Specifications

- Ergometer Magnetic Elliptical.
- 8 Kgs flywheel with outer magnetic system.
- 3 pcs crank for smooth functioning.
- Three level stride adjustment with pedals.
- Digital coloured screen showing time, rpm, speed, distance, calories, pulse, recovery and body fat.
- Digital Tension Control System.
- 1 manual and 12 programs.
- Transport wheels.
- Maximum User Weight 120 Kgs.

## **KH-653** Magnetic Elliptical

### Specifications

- 8 Kg magnetic wheel with two way system
- 15 level manual Tension Control System
- Computer display for speed, time, distance, temperature, odo, pulse & calories
- With hand pulse
- Smooth & silent belt transmission
- With wheels for easy movement.
- Max User Weight 120 Kgs



## **KH-736** Magnetic Elliptical

### Specifications

- Assembled with "universal Pivot Joint" for crank axle.
- Computer display for time, speed, distance, pulse, cal, rpm, scan, pulse recovery.
- 15 level manual tension control.
- 8 kgs. Two ways, flat belt, disk crank.
- Manual adjustable stride length.
- With hand pulse.
- Transport wheels.
- Maximum User Weight 120 kgs.



## **KH-265** Magnetic Elliptical

### Specifications

- Assembled with 'Universal Pivot Joint' for crank axle.
- Computer display for speed, time, distance & calories.
- 8 level Tension Control System
- 3 racing games integrated in the computer display.
- G1 to G4 training modes available.
- With wheels for easy movement.
- With adjustable seat.
- Adjusting caps for uneven floor.
- TUV / GS approved.
- With hand pulse and body fat.
- Max User Weight 110 Kgs.



## **KH-735** Magnetic Elliptical

### Specifications

- Assembled with 'Universal Pivot Joint' for crank axle.
- Computer display for speed, time, distance and calories.
- 8 level Tension Control System.
- 3 racing games integrated in the computer display.
- G1 to G4 training modes available.
- With wheels for easy movement.
- Adjusting caps for uneven floor.
- TUV / GS approved.
- With hand pulse and body fat.
- Maximum User Weight 110 Kgs.



## KH-80201

### Magnetic Elliptical

#### Specifications

- Assembled with 'Universal Pivot Joint' for crank axle.
- Automatically adjust the tolerance of disk running.
- Computer display for speed, time, distance, calories and room temperature.
- 6 Kg fly wheel with inner magnetic system.
- 8 level Tension Control System.
- With wheels for easy movement.
- Adjusting caps for uneven floor.
- TUV / GS approved.
- With hand pulse and body fat.
- Maximum User Weight 100 Kgs.



## KH-70201

### Magnetic Elliptical

#### Specifications

- Assembled with 'Universal Pivot Joint' for crank axle.
- Automatically adjust the tolerance of disk running.
- Computer display for speed, time, distance, calories and room temperature.
- 6 Kg fly wheel with magnetic system.
- 8 level Tension Control System.
- With wheels for easy movement.
- Adjusting caps for uneven floor.
- TUV / GS approved.
- With hand pulse and body fat.
- Maximum User Weight 100 Kgs.



## KH-66

### Magnetic Elliptical

#### Specifications

- Assembled with 'Universal Pivot Joint' for crank axle
- Large LCD display for speed, time, distance & calories
- 8 level Tension Control System
- With 4 kg flywheel
- Belt driven with magnetic resistance system
- With wheels for easy movement
- With adjustable seat
- Adjusting caps for uneven floor
- With hand pulse
- Max User Weight : 100 Kgs.



## KH-65

### Magnetic Elliptical

#### Specifications

- Assembled with 'Universal Pivot Joint' for crank axle
- Large LCD display for speed, time, distance & calories
- 8 level Tension Control System
- With 4 kg flywheel
- Belt driven with magnetic resistance system
- With wheels for easy movement
- Adjusting caps for uneven floor
- With hand pulse
- Max User Weight : 100 Kgs.



## **KH-350** Metallic Double Burner

### Specifications

- Orbitrek with seat and hand pulse.
- Luxurious design with steel wheel for smooth working.
- Brake system for tension control.
- Additional handle support in front.
- Can be used as a cycle or cross-trainer.
- Computer display for hand pulse, time, speed, distance and calories.
- Adjustable handle bars for varying heights.
- Max User Weight : 100 Kgs.



## **KH-235** Metallic Double Burner

### Specifications

- Orbitrek with seat and hand pulse.
- Luxurious design with steel wheel for smooth working.
- Brake system for tension control.
- 6 Kg fly wheels.
- Can be used as a cycle or cross-trainer.
- Computer display for hand pulse, time, speed, distance and calories.
- Adjustable handle bars for varying heights.



## **KH-200** Double Burner

### Specifications

- Orbitrek with seat.
- Can be used as a cycle or cross-trainer.
- Computer display for time, speed, distance & calories.
- Micro adjustable tension control.
- Adjustable handle bars for varying heights.



## **KH-195** Double Burner

### Specifications

- Orbitrek with seat.
- Can be used as a cycle or cross-trainer.
- Computer display for time, speed, distance & calories.
- Micro adjustable tension control.
- Adjustable handle bars for varying heights.



# KH-1040

## Commercial Recumbent Bike

### Specifications

- LED display showing Pulse, Recovery, Time, RPM, Speed, Distance, Calories, Watt, Heart Rate and Resistance.
- With self generator system.
- 12 programs, including 1 manual, 4 HRC, 2 test, 1 recovery and 4 user.
- Magnetic brake with V-belt drive system.
- 16 levels tension control system.
- Ergonomic seat adjustment.
- With heart rate receiver.
- Hand grips with pulse sensors.
- Counter balance pedals.
- With bottle holder.
- Adjustable PU seat.
- Transport wheels.
- Maximum user weight : 140 kg
- LXWXH : 163X65X152 CM.



# KH-575

## Commercial Recumbent Bike

### Specifications

#### Drive

- Two stage drive with poly V-belt.
- Resistance System : Self powered hybrid brake
- Resistance Level : 32 Levels

#### Monitor

- 7 window dot matrix LED display
- Display readouts : Time, Distance, Speed, Level, Calories, Pulse and Watts
- Various motivating programs for different workout requirements

#### Special Features

- The easy-to-operate adjustment bar to move the seat forward and backward
- Walk-through design to get on / off easily
- Adjustable resistance levels
- Aluminum upright beam
- Hidden 3 piece cranks inside crank cover for safety
- Transport wheels
- With easy moving wheels
- Built-in receiver
- Maximum User Weight: 150 kgs
- LxWxH : 183x68x90 cms

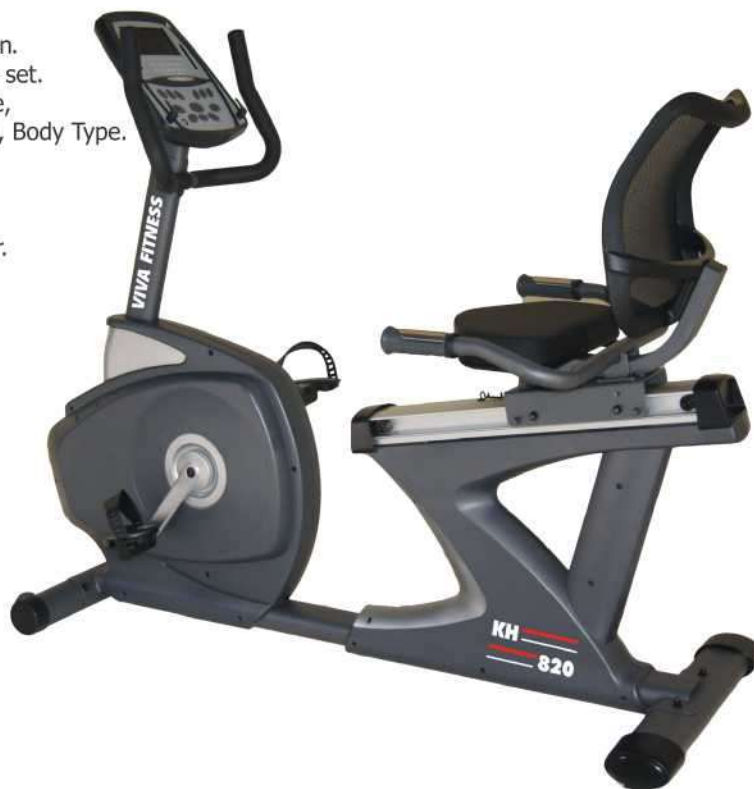


# KH-820

## Light Commercial Recumbent Bike

### Specifications

- Auto scan advanced computer with blue BACK-LT LCD screen.
- 12 programs, including 1 manual, 2 HRC, 1 body fat, 2 user set.
- Display showing Pulse, Recovery, Time, RPM/Speed, Distance, K joule or Calories, Watt/Target Heart rate, Fat%, BMI, BMR, Body Type.
- Magnetic brake with V-belt drive system.
- 16 levels tension control system.
- With adapter power system.
- Innovative adjustment end cap, easy to go with uneven floor.
- Aluminum upright & seat rails.
- PU seat & back rest.
- Easy to adjust seat position.
- Hand grip pulse sensors.
- Hidden crank(3pcs) safer & neat.
- Transport wheels.
- Maximum user weight: 130 kg



# KH-652

## Magnetic Recumbent Bike

### Specifications

- 7 Kg Flywheel
- 15 level Tension Control System
- Computer display for speed, time, distance, calories, odo and pulse
- With wheels for easy movement
- Adjusting cap for uneven floor
- Deluxe big seats
- Max. User Weight 125 Kgs



## **KH-725** Magnetic Recumbent Bike



### Specifications

- 6 Kg fly wheel.
- 8 level Tension Control System.
- Computer display for speed, time, distance, calories, RPM and pulse.
- 3 racing games integrated in the computer display.
- G1 to G4 training modes available.
- With wheels for easy movement.
- Adjusting cap for uneven floor.
- TUV / GS approved.
- Maximum User Weight 110 Kgs.



## **KH-724** Magnetic Recumbent Bike



### Specifications

- 6 Kg fly wheel.
- 8 level Tension Control System.
- Computer display for speed, time, distance, calories, RPM and pulse.
- With wheels for easy movement.
- Adjusting cap for uneven floor.
- TUV / GS approved.
- Maximum User Weight 110 Kgs.







## **KH-704** Magnetic Recumbent Bike

### Specifications

- 6 Kg fly wheel with inner magnetic system.
- 8 level Tension Control System.
- Computer display for speed, time, distance, calories and pulse.
- Health Index : Pulse recovery and Body fat analyze.
- With wheels for easy movement.
- Adjusting cap for uneven floor.
- TUV / GS approved.
- Maximum User Weight 100 Kgs.

## **KH-703** Magnetic Recumbent Bike

### Specifications

- 6 Kg fly wheel with inner magnetic system.
- 8 level Tension Control System.
- Computer display for speed, time, distance, calories and pulse.
- Health Index : Pulse recovery and Body fat analyze.
- With wheels for easy movement.
- Adjusting cap for uneven floor.
- TUV / GS approved.
- Maximum User Weight 100 Kgs.



## **KH-64** Magnetic Recumbent bike

### Specifications

- Magnetic flywheel system
- 8 level manual Tension Control System
- Large LCD display for speed, time, distance, calories and pulse
- With 4kg flywheel
- Adjustable handle bar with hand pulse
- Max. User Weight 100 Kgs



## KH-1020

### Commercial Upright Bike

#### Specifications

- LED display showing Pulse, Recovery, Time, RPM, Sp Watt, Heart Rate and Resistance.
- With self generator system.
- 12 programs: 4 HRC, 3 goal, 1 recovery and 4 user.
- Magnetic brake with V-belt drive system.
- 16 levels tension control system.
- With heart rate receiver.
- Hand grips with pulse sensors.
- Counter balance pedals.
- With bottle holder.
- PU seat with adjustable height.
- Transport wheels.
- User weight : 140 kg.
- LXWXH : 105X56X152 CM.



## KH-565

### Commercial Upright Bike

#### Specifications

##### Drive

- Two stage drive with poly V-belt.
- Resistance System : Self powered
- Resistance Level : 32 Levels

##### Monitor

- 7 window dot matrix LED display
- Display readouts : Time, Distance, Speed, Level, Calories, Pulse and Watts
- Various motivating programs for different workout requirements

##### Special Features

- The easy-to-operate seat for up and down position
- Walk-through design to get on / off easily
- Accessory tray with cup holder
- Adjustable resistance levels
- Aluminum upright beam
- Hidden 3 piece cranks inside crank cover for safety
- Transport wheels
- With easy moving wheels
- Built-in receiver
- Maximum User Weight: 150 kgs
- LxWxH : 111x56x148 cms



## KH-815

### Light Commercial Upright Bike

#### Specifications

- Auto scan advanced computer with blue BACK-LT LCD screen.
- 12 programs, including 1 manual, 2 HRC, 1 body fat, 2 user set.
- Display showing Pulse, Recovery, Time, RPM/Speed, Distance, K joule or Calories, Watt/Target Heart rate, Fat%, BMI, BMR, Body Type.
- Magnetic brake with V-belt drive system.
- 16 levels tension control system.
- With adapter power system.
- Innovative adjustment end cap, easy to go with uneven floor.
- Aluminum upright beam.
- Hand grip pulse sensors.
- Counter balance pedals.
- PU seat, seat height is adjustable.
- Hidden crank(3pcs) safer & neat.
- Transport wheels.
- Maximum user weight: 130 kg.



## KH-190 Magnetic Bike

#### Specifications

- 8 Kg fly wheel with inner magnetic system.
- 1 manual and 3 programs.
- 8 level Tension Control System.
- Computer display for speed, time, distance, calories, recovery and body fat.
- With hand pulse.
- With wheels for easy movement.
- Adjustable seat height for different users.
- Adjusting caps for uneven floor.
- TUV / GS Approved.
- 3 pcs. Crank / Axle System.
- Maximum User Weight 120 Kgs.



## KH-448 Magnetic Bike

#### Specifications

- 8 Kg fly wheel with magnetic system
- 8 level Tension Control System
- Computer display for speed, time, distance, pulse, temperature & calories
- 3 pcs advance crank system
- With hand pulse
- With wheels for easy movement
- Adjustable seat height for different users
- Adjusting caps for uneven floor
- Max. User Weight 120 Kgs



## KH-715 Magnetic Bike

#### Specifications

- 6 Kg fly wheel with magnetic system.
- 8 level Tension Control System.
- Computer display for speed, time, distance, pulse, RPM, temperature & calories.
- 3 pcs advance crank system
- With hand pulse.
- With wheels for easy movement.
- Adjustable seat height for different users.
- Adjusting caps for uneven floor.
- TUV / GS Approved.
- Maximum User Weight 110 Kgs.



## **KH-795** Magnetic Bike

### Specifications

- 6 Kg fly wheel with magnetic system.
- 8 level Tension Control System.
- Computer display for speed, time, distance & calories.
- With hand pulse.
- With wheels for easy movement.
- Adjustable seat height for different users.
- Adjusting caps for uneven floor.
- TUV / GS Approved.
- Maximum User Weight 110 Kgs.



## **KH-63** Magnetic Bike

### Specifications

- Magnetic flywheel system
- 8 level manual Tension Control System
- Large LCD display for speed, time, distance, calories and pulse
- With 4kg flywheel
- Adjustable handle bar with hand pulse
- Max. User Weight 100 Kgs



## **KH-62** Magnetic Bike

### Specifications

- Magnetic flywheel system
- 8 level manual Tension Control System
- Large LCD display for speed, time, distance, calories and pulse
- With 4kg flywheel
- Vertical & Horizontal seat adjustment
- Handle bar with hand pulse
- Max. User Weight 100 Kgs



## **KH-555** Magnetic Bike

### Specifications

- 5 Kg fly wheel.
- 8 level tension control system.
- Computer display for speed, time, distance and calories.
- With hand pulse.
- Handle bar adjustment
- With wheels for easy movement.
- Both way adjustable seat for different user.
- Adjusting caps for uneven floor.
- TUV / GS Approved.
- Maximum User Weight 100 Kgs.



## **KH-550** Magnetic Bike

### Specifications

- 5 Kg fly wheel.
- 8 level tension control system.
- Computer display for speed, time, distance and calories.
- With hand pulse.
- With wheels for easy movement.
- Adjustable seat height for different users.
- Adjusting caps for uneven floor.
- TUV / GS Approved.
- Maximum User Weight 100 Kgs.



## **KH-442** X Bike

### Specifications

- Magnetic wheel with two ways system.
- 8 Level Tension Control System.
- Computer display for speed, time, distance & calories.
- PU saddle with backpack
- Smooth & silent belt transmission.
- With wheels for easy movement.
- Adjustable seat height for different users.
- Max User Weight 100 Kgs.



## **KH-245** Air Bike

### Specifications

- Micro-adjustable tension.
- Computer display for speed, pulse, time, distance and calories.
- Adjustable seat height for different users.
- Pedal with strap.



# CULTBIKE X1

## Commercial Group Bike



### LIVE CLASSES

- 500 Hour Power Walk Live Classes
- Live Training With Expert Trainers
- Achieve Your Goals



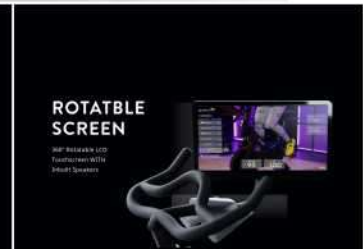
### SCENIC RIDES

- Inspiring Scenic Rides
- 100+ Scenic Rides To Choose From
- Choose The Ride That Suits Your Mood



### ON-DEMAND WORKOUTS

- 100+ On-Demand Workouts
- Choose Your Workout, Paced And Repetitive



### ROTATBLE SCREEN

- 100° Rotatable LCD
- Touchscreen With 1000+ Squares

## KH-153

### Spin Bike

#### Specifications

- Can be used for clubs.
- Adjustable resistance.
- Dipping handle bar.
- Ultra sturdy structure with 20 kgs CNC flywheel.
- With adjustable seat.
- Computer functions : time, speed, distance, calories & pulse.
- Maximum User Weight 140 Kgs.



## KH-152

### Spin Bike

#### Specifications

- Sturdy structure with 21 kgs stainless steel fly wheels.
- Adjustable resistance.
- Dipping handle bar.
- With adjustable seat.
- With bottle holder, without bottle.
- Computer functions : time, speed, distance, calories & pulse.
- Maximum User Weight 120 Kgs.



## KH-140

### Spin Bike

#### Specifications

- Sturdy structure with stainless steel fly wheel.
- Adjustable seat.
- Adjustable and ergonomic handle bar assist the most comfortable sitting.
- Resistance levels : Variable.
- Computer display for showing time, distance, speed & RPM.
- SPD racing pedals.
- Transport wheels for easy movement.
- Maximum User Weight 100 Kgs



# 318LP

## MULTI GYM

### ► Specifications

- Innovative design and ideal for corporate & society use
- Multi station gym with 1 steel weight stacks of 90 Kgs.
- Multiple Exercise Function – Seated bench press, Row, Pull down, Chest clamp, Tricep push down, Standing abdominal curl, Leg extension, Standing leg curl, Standing bicep curl, Golf, Arm extension, Front raise, Shrugs & Leg press.
- Durable powder coated finish
- Comfortable seat pads
- Arc cover for protection
- LXWXH : 219X222X213 CM



# 318MG

## MULTI GYM

### ► Specifications

- Innovative design and ideal for corporate & society use
- Multi station gym with 1 steel weight stacks of 90 Kgs.
- Multiple Exercise Function – Seated bench press, Row, Pull down, Chest clamp, Tricep push down, Standing abdominal curl, Leg extension, Standing leg curl, Standing bicep curl, Golf, Arm extension, Front raise & Shrugs.
- Durable powder coated finish
- Comfortable seat pads
- Arc cover for protection
- LXWXH : 213X150X213 CM





## **KH-325** Deluxe Home Gym

### ► Specifications

- High end home gym with durable powder coated finish.
- 220 LBS weight plates with metal cover.
- Contoured deep padded seat and back rest.
- Functions : Chest press, Pec fly, Leg extension, Lat pull down & Bicep curl.
- With lat pull bar and ankle strap.



**OPTIONAL**

Leg Press  
Attachment

**OPTIONAL**

Power Tower  
And  
Bench Attachment

## KH-4700 Home Gym

### Specifications

- Home Gym with preacher curl.
- With push up bars.
- With situp bench.
- 130 LBS PVC weights with metal cover.
- Heavy 50mm x 50mm square tubular steel frame.



## KH-313 Home Gym

### Specifications

- Home Gym with weight cover.
- 150 LBS PVC weights.
- 60mm x 1.5mm oval tubular steel frame.
- With abdominal strap.



## KH-312 Home Gym

### Specifications

- Home Gym without weight cover.
- 150 LBS PVC weights.
- 60mm x 1.5mm oval tubular steel frame.
- With abdominal strap.



## **X50** PORTABLE SQUAT STAND

### Specifications

- Can be used as both for squats & bench press exercises.



## **X75** FID BENCH

### Specifications

- Heavy duty frame structure.
- Options of flat, incline & decline position.
- Can be used for multiple exercises.



## **X100** MULTI PURPOSE BENCH

### Specifications

- Flat, incline & decline position
- With preacher curl attachment
- With leg extension & prone leg curl



## **X200** **PLATE LOADED STRENGTH TRAINER**

### ► Specifications

- DIMENSIONS : 175X170X220 CMS
- MAXIMUM WEIGHT LOADING CAPACITY : 120 KGS



## **X400** **WALL MOUNTED FOLDABLE SQUAT RACK**

### ► Specifications

- DIMENSIONS : 115X138X230 CMS
- MAXIMUM WEIGHT LOADING CAPACITY : 200 KGS



## **X500** **HALF RACK**

### Specifications

- DIMENSIONS : 126X180X232 CMS
- MAXIMUM WEIGHT LOADING CAPACITY : 200 KGS



## **X600** **FUNCTIONAL RACK WITH LONG PULL**

### Specifications

- DIMENSIONS : 154X170X232 CMS
- MAXIMUM WEIGHT LOADING CAPACITY : 120 KGS



# X900 FTSM

## ► Specifications

- FUNCTIONAL TRAINER CUM SMITH MACHINE
- DIMENSIONS : 205X147X232 CMS
- WEIGHT STACK OF 80 KG X 2
- MAXIMUM WEIGHT LOADING CAPACITY : 200 KGS



# SAVAGE

## ► Specifications

- FUNCTIONAL TRAINER CUM SMITH MACHINE CUM MULTI GYM
- DIMENSIONS : 180X219X227 CMS
- WEIGHT STACK OF 100 KG X 2
- MAXIMUM WEIGHT LOADING CAPACITY : 200 KGS



## VX-3600

### Olympic Weight Bench

#### Specifications

- Olympic Weight Bench.
- Flat / Incline / Decline positions.
- Adjustable incline for barbell set holder and seat.
- Padded rollers and seat for maximum comfort.
- Adjustable seat.
- Maximum User Weight 120 Kgs.



## VX-3500

### Olympic Weight Bench

#### Specifications

- Olympic Weight Bench.
- Adjustable incline for barbell set holder and seat.
- Padded rollers and seat for maximum comfort.
- Adjustable seat.
- Maximum User Weight 100 Kgs.



## VX-3400

### Adjustable Bench

#### Specifications

- Flat / incline / decline position
- Leg extension / curl
- Maximum user weight 90 kgs



## VX-203a

### Adjustable Utility Bench

#### Specifications

- Ideal exercise for building and tightening upper / lower body and abdominal muscles.
- Adjustable incline and decline.
- Padded seat for maximum comfort.





## KH-215

### 3 TIER DUMBBELL RACK

#### Specifications

- Sturdy Design.
- Made from Heavy Duty Cast Iron angles.
- Can hold upto 8-10 pairs of dumbbell.



## KH-216

### 3 IN 1 STORAGE RACK

#### Specifications

- Sturdy Design.
- Made from Heavy Duty Cast Iron angles.
- Can hold upto 8-10 pairs of dumbbell.
- Can store weight plates and 4 barbells.



## KH-218

### Dumbbell Rack

#### Specifications

- Made from Heavy Duty Cast Iron angles.
- Can hold 10 pairs of Dumbbells.



## VX-102

### SIT-UP BENCH

#### Specifications

- Ideal exercise for building and tightening abdominal muscles.
- Adjustable inclination.
- Padded roller and seat for maximum comfort.



## RUBBER COATED VIVA POWER FIXED BARBELLS WITH STRAIGHT AND CURL HANDLE BAR

- Made from high grade virgin rubber for long life.
- Dia 30mm and length 100cm.
- Tear proof, soundless & bouncy effect.

AVAILABLE SIZES
KGS
10
15
20
25
30
35
40



## VIVA THERMO POWER SOLID DUMBBELLS

- Made from high grade thermoplastic rubber (TPR) for long life.
- Tear proof, soundless & bouncy effect.



AVAILABLE SIZES
KGS
2.5
5
7.5
10
12.5
15
17.5
20
22.5
25
30
35
40
45
50

## VIVA POWER SOLID DUMBBELL

- Made from high grade virgin rubber for long life.
- Tear proof, soundless & bouncy effect.



AVAILABLE SIZES
KGS
2.5
5
7.5
10
12.5
15
17.5
20
22.5
25
27.5
30
35
40
45
50

## VIVA FORCE DUMBBELLS

- Made from rubber for long life.
- Tear proof, soundless & bouncy effect.



AVAILABLE SIZES
KGS
2.5
5
7.5
10
12.5
15
17.5
20
22.5
25
27.5
30
35
40

## HEXAGON DUMBBELL

- Made from rubber for long life.
- Tear proof, soundless & bouncy effect.



AVAILABLE SIZES
KGS
2.5
5
7.5
10
12.5
15
17.5
20
25

# COLOURED BUMPER PLATES

- Made from high quality rubber.

AVAILABLE SIZES
KGS
5
10
15
20
25



# VIVA FITNESS TPR OLYMPIC HOLE PLATES

- Made from high grade thermoplastic rubber for long life.
- Tear proof, soundless & bouncy effect.



AVAILABLE SIZES
KGS
1.25
2.5
5
7.5
10
15
20
25

## VIVA POWER OLYMPIC HOLE PLATES

- Patented : Unique Anti Roll Design
- Made From Durable And Premium Grade Virgin Rubber
- Aesthetically Designed With Epdm Red Granules
- Ergonomically Designed Grips
- Long Lasting Aluminium Bushes



AVAILABLE SIZES
KGS
1.25
2.5
5
7.5
10
15
20
25

## VIVA FORCE OLYMPIC HOLE PLATES

- Made from high grade virgin rubber for long life.
- Tear proof, soundless & bouncy effect



AVAILABLE SIZES
KGS
1.25
2.5
5
7.5
10
15
20
25

## NEOPRENE KETTLE BELL



AVAILABLE SIZES
KGS
2
4
8
12
16
20
24
28
32

## IR94088

### STRONGMAN THICK BARBELL

- Unique 50 mm grip bar
- Hard chrome tempered alloy steel
- Max loading : 1600 lbs
- 7.2 ft olympic length.
- Net weight : 20 kgs.



## IR101

### COMPETITION OLYMPIC BAR

- Net weight : 20 kgs.
- 7.2 ft olympic length.
- Flexible barbell made from heat treated Spring Steel.
- High quality nickel chrome finish.
- Comes with 2 bronze bush & 4 needle bearing.
- Shaft diameter : 28mm.
- Sleeve diameter : 50mm.
- Shaft length : 51.5"
- Sleeve length : 15.2"
- Max. load capacity : 907 kg / 2000 Lbs.



## IR105

### POWER LIFTING BAR

- Net weight : 20 kgs.
- 7.2 ft olympic length.
- Flexible barbell made from heat treated Spring Steel.
- High quality nickel chrome finish.
- Comes with 2 bronze bush & 4 needle bearing.
- Shaft diameter : 28mm.
- Sleeve diameter : 50mm.
- Shaft length : 51.5"
- Sleeve length : 15.2"
- Max. load capacity : 816 kg / 1800 Lbs.



## IR104

### HEAVY LIFTING BAR

- Net weight : 20 kgs.
- 7.2 ft olympic length.
- Made from heat treated alloy steel.
- High quality nickel chrome finish.
- Comes with 2 bronze bush.
- Shaft diameter : 30mm.
- Sleeve diameter : 50mm.
- Shaft length : 53"
- Sleeve length : 15.2"
- Max. load capacity : 816 kg / 1800 Lbs.



## IR94039

### HEAVY DUTY OLYMPIC BAR

- Net weight : 20 kgs.
- 7.2 ft olympic length.
- Made from carbon steel.
- High quality nickel chrome finish.
- Shaft diameter : 30mm.
- Sleeve diameter : 50mm.
- Sleeve length : 14"
- Max. load capacity : 816 kg / 1800 Lbs.



## IR94038

### OLYMPIC BAR

- Net weight : 16 kgs.
- 7.2 ft olympic length.
- Made from carbon steel.
- High quality nickel chrome finish.
- Shaft diameter : 28mm.
- Sleeve diameter : 50mm.
- Sleeve length : 14"



## IR94052

### 72" OLYMPIC BAR

- Net weight : 13 kgs.
- High quality nickel chrome finish.
- Shaft diameter : 28mm.
- Sleeve diameter : 50mm.
- Sleeve length : 11".



## IR94051

### 60" OLYMPIC BAR

- Net weight : 11 kgs.
- High quality nickel chrome finish.
- Shaft diameter : 28mm.
- Sleeve diameter : 50mm.
- Sleeve length : 10".



## IR94048

### 48" OLYMPIC BAR

- Net weight : 10 kgs.
- High quality nickel chrome finish.
- Shaft diameter : 28mm.
- Sleeve diameter : 50mm.
- Sleeve length : 8".



## IR94047

### 47" EZ CURL BAR

- Net weight : 10 kgs.
- High quality nickel chrome finish.
- Shaft diameter : 28mm.
- Sleeve diameter : 50mm.
- Sleeve length : 8".



## IR102

### MULTI GRIP BAR

- Size : 2.2 meter



## IR94083

### 56" OLYMPIC BAR



## IR94045

### OB20" OLYMPIC BAR



## IR94025

14" REGULAR RUBBER  
HANDLE HOLLOW BAR

• Matches our small hole rubber plates



## IR94046

OLYMPIC TRICEP BAR



## IR94065

OLYMPIC BAR COLLAR (STEEL)



## IR94064

OLYMPIC BAR COLLAR (PLASTIC)



## IR95069

NYLON LAT ROPE



## IR94061

COLLAR



## IR95017

38" SOLID LAT BAR



## IR95015

48" SOLID LAT BAR



## IR95021



## IR95020

20" SOLID LAT BAR



## IR95023



## IR95022



**IR95025**



**IR95019**



**IR95029**



**IR95028**



**IR103**

ROPE TRAINER

- Unique cardio workout
- Adjustable resistance control



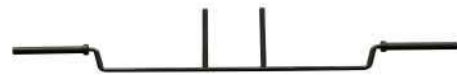
**IR95024**



**IR95026**



**IR94084**



**IR94089**

OLYMPIC BAR PIVOT



**IR94090**

T BAR HANDLE



**POUND PAD**





**TUNTURI®**



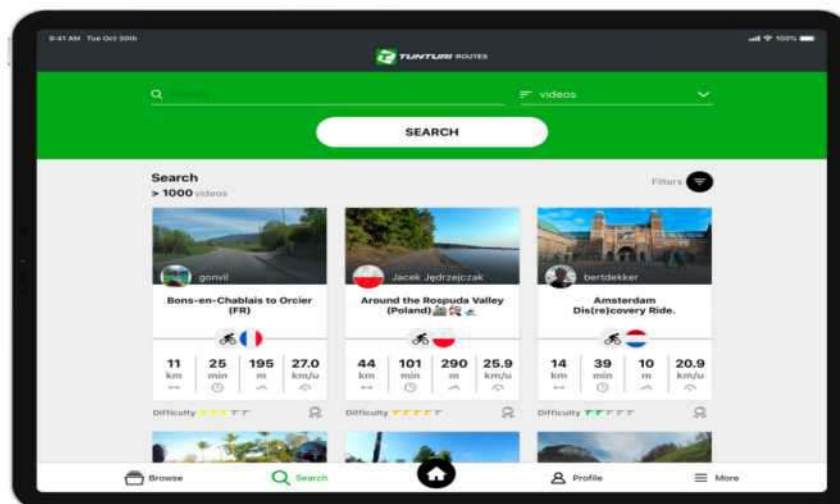
**INTRODUCING  
TUNTURI ROUTES APP  
For all our  
cardio equipment**

**Explore the  
World from  
Home**



## Explore the world from home

Do you want to check out your holiday destination or do you wish to cycle or run through the famous Central Park in New York City? This is possible with Tunturi Routes. Make use of the videos users have uploaded all around the world. The resistance of your cardio equipment will sync automatically with the elevation changes in the video. It's like you are there...



## Choose from 50,000+ videos

Never get bored on your cardio trainer again. The platform offers you 50,000+ videos you can choose to play. The videos are from places all over the world, from the United States to Australia and everything in between.



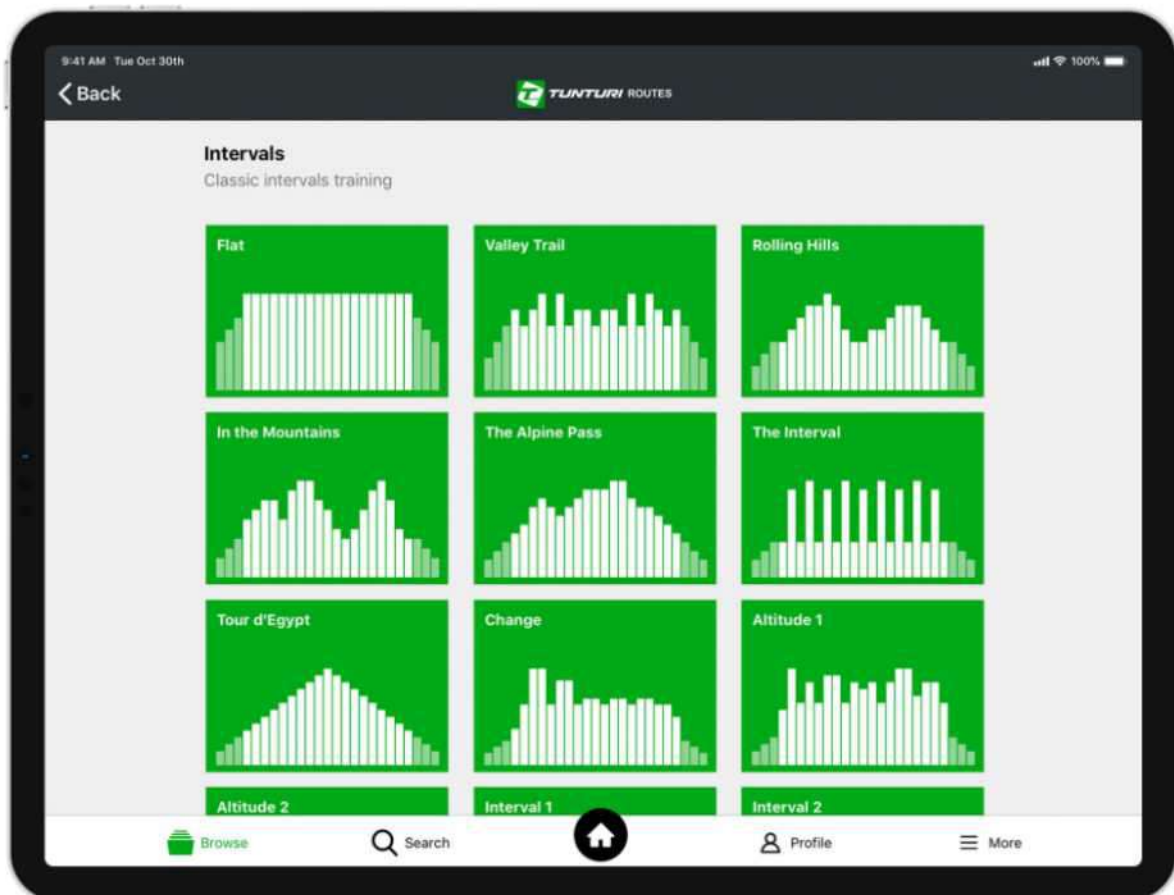
## Cycle, cross and run at your own level

Is cycling up the Alpe 'D Huez on your bucket list, but still far out of reach? You can easily adjust the difficulty of video, which makes it possible for you to conquer mountains at your own level. Is the road ahead not challenging enough, increase the level of difficulty and challenge yourself.



## Follow coaching classes from home

Do you know spin classes? A room full of sweaty people on spinning bikes accompanied by loud music? Coaches around the world have uploaded their coaching lessons on the platform, so you can follow the instructions of the coach from the comfort of your own home.



## Expand your training profiles

Doesn't your cardio trainer have enough training programs? No worries! Tunturi Routes offers a lot more training programs to do interval training. Start an interval training profile you like and decide yourself how long it takes.

<b>SERIES</b>	<b>ENDURANCE</b>
<b>TYPE</b>	<b>T90</b>



MONITOR	DISPLAY TYPE	10 INCH LCD BACKLIGHT + 4 LED (GRAPHICAL PROFILES)	ERGONOMICS	RUNNING BELT / PROFILE	1.8 MM / CROSS TIP
	PROGRAMS TOTAL	<b>44</b>		HANDGRIP CONTROL SPEED/INCLINE	✓
		36 PRESET 3 USER 1 QUICK START 1 BODY FAT 1 DISTANCE COUNTDOWN 1 CALORIES COUNTDOWN 1 TIME COUNTDOWN		FRONT HANDLEBAR	✓
	TIME, DISTANCE, CALORIE	✓		HEART RATE VIA HANDSETS	✓
				ANALOG CHESTBELT CONNECTION	✓ 5.0 - 5.4 KHZ
<b>GENERAL</b>	MOTOR	5 HP AC		BLUETOOTH CHEST BELT CONNECTION	✓ VIA APP
	SPEED	0.8 - 24 KM/H		BOTTLE HOLDER	✓
	INCLINE	15		TRANSPORT WHEELS	✓
	RUNNING SURFACE	W 55 x L 153 CM	<b>EXTRA</b>	BLUETOOTH	✓
	RUNNING DECK TYPE	21 MM		USB CHARGER	✓
	FOLDABLE	✓ SOFT DROP		APPS (ANDROID / IOS)	(TUNTURI ROUTES / ANYRUN / KINOMAP)
	SHOCK ABSORBING	T-FLEX COMFORT TOP		TABLET SUPPORT	✓
	MAX USER WEIGHT	150 KG		STEP COUNTER	✓
				USE	LIGHT COMMERCIAL


SERIES	ENDURANCE
TYPE	T80



MONITOR	DISPLAY TYPE	10 INCH LCD BACKLIGHT + 4 LED (GRAPHICAL PROFILES)	ERGONOMICS	RUNNING BELT / PROFILE	1.8 MM / CROSS TIP
	PROGRAMS TOTAL	44		HANDGRIP CONTROL SPEED/INCLINE	✓
		36 PRESET 3 USER 1 QUICK START 1 BODY FAT 1 DISTANCE COUNTDOWN 1 CALORIES COUNTDOWN 1 TIME COUNTDOWN		FRONT HANDLEBAR	✓
	TIME, DISTANCE, CALORIE	✓		HEART RATE VIA HANDSETS	✓
				ANALOG CHESTBELT CONNECTION	✓ 5.0 - 5.4 KHZ
				BLUETOOTH CHEST BELT CONNECTION	✓ VIA APP
				BOTTLE HOLDER	✓
				TRANSPORT WHEELS	✓
			EXTRA	BLUETOOTH	✓
				USB CHARGER	✓
				APPS (ANDROID / IOS)	(TUNTURI ROUTES / ANYRUN / KINOMAP)
				TABLET SUPPORT	✓
				STEP COUNTER	✓
				USE	LIGHT COMMERCIAL
GENERAL	MOTOR	5.5 HP DC			
	SPEED	0.8 - 22 KM/H			
	INCLINE	15			
	RUNNING SURFACE	W 55 x L 153 CM			
	RUNNING DECK TYPE	21 MM			
	FOLDABLE	✓ SOFT DROP			
	SHOCK ABSORBING	T-FLEX COMFORT TOP			
	MAX USER WEIGHT	150 KG			

<b>SERIES</b>	<b>PERFORMANCE</b>
<b>TYPE</b>	<b>T50</b>



MONITOR	DISPLAY TYPE	4 LED + 400M TRACK	ERGONOMICS	RUNNING BELT / PROFILE	1.6 MM / SAND
	PROGRAMS TOTAL	 44		HANDGRIP CONTROL SPEED/INCLINE	✓
		36 PRESET 3 USER 1 QUICK START 1 BODY FAT 1 DISTANCE COUNTDOWN 1 CALORIES COUNTDOWN 1 TIME COUNTDOWN		FRONT HANDLEBAR	✓
	TIME, DISTANCE, CALORIE	✓		HEART RATE VIA HANDSETS	✓
				ANALOG CHESTBELT CONNECTION	✓ 5.0 - 5.4 KHZ
<b>GENERAL</b>	MOTOR	4.5 HP DC		BLUETOOTH CHEST BELT CONNECTION	✓ VIA APP
	SPEED	1.0 - 20 KM/H		BOTTLE HOLDER	✓
	INCLINE	15		TRANSPORT WHEELS	✓
	RUNNING SURFACE	W 50 x L 140 CM	<b>EXTRA</b>	BLUETOOTH	✓
	RUNNING DECK TYPE	18 MM		USB CHARGER	✓
	FOLDABLE	✓ SOFT DROP		APPS (ANDROID / IOS)	TUNTURI ROUTES / ANYRUN / KINOMAP
	SHOCK ABSORBING	T-FLEX COMFORT PLUS		TABLET SUPPORT	✓
	MAX USER WEIGHT	135 KG		STEP COUNTER	✓
				USE	HOME

SERIES	PERFORMANCE
TYPE	C55



MONITOR		GENERAL		BRAKE SYSTEM		ERGONOMICS		
DISPLAY SIZE	5.5 INCH			PMS, SERVOMOTOR		ADJUSTABLE MONITOR	✓	
DISPLAY TYPE	COLOR LCD BACKLIGHT			FLYWHEELSYSTEM	32 KG	HANDLEBARS FIXED AND SWIVEL	✓	
PROGRAMS TOTAL	21			RESISTANCE	350 W	HEART RATE VIA HANDSETS	✓	
	1 MANUAL, 12 PRESET, 4 HEART RATE, 1 WATT, 1 RECOVERY, 1 BODY FAT/BMI 1 USER			ERGOMETER	✓	ANALOG CHESTBELT CONNECTION	✓ 5.0 - 5.4 KHZ	
RESISTANCE LEVELS	32			POWER SUPPLY	ADAPTER 9V/1A	BLUETOOTH CHEST BELT CONNECTION	✓	
WATT PROGRAM	✓ 10 - 350 PER 5 WATT			STRIDE LENGTH	19 INCH / 50 CM	BOTTLE HOLDER	HOLDER + BOTTLE	
FITNESS TEST	✓			PEDALS	COMFORT GRIP	TRANSPORT WHEELS	ROBUST	
TIME, DISTANCE, CALORIE	✓			DIMENSIONS	L 195 W 74 H 162 CM	EXTRA	BLUETOOTH	✓
				MAX. USER WEIGHT	135 KG		APPS(ANDROID / IOS)	TUNTURI ROUTES / CONSOLE+ TRAINING/ KNOWAP / ZWIFT
							TABLET SUPPORT	✓
							USE	HOME

SERIES

PERFORMANCE

TYPE

E50R

MONITOR	DISPLAY TYPE	5.5 INCH COLOR LCD BACKLIGHT	GENERAL	BRAKE SYSTEM	PMS, SERVMOTOR	ERGONOMICS	HANDLEBAR	FIXED
	PROGRAMS TOTAL	21		FLYWHEELSYSTEM	11 KG		SEAT	COMFORT
		1 MANUAL 12 PRESET 4 HEART RATE 1 WATT 1 RECOVERY 1 BODY FAT(BMI) 1 USER		RESISTANCE	350 W		SEAT ADJUSTMENT	HORIZONTAL
	RESISTANCE LEVELS	32		ERGOMETER	✓		BACKREST	COMFORT
	WATT PROGRAM	✓ 10 - 350 PER 5 WATT		POWER SUPPLY	ADAPTER 9V/1A		BACKREST ADJUSTABLE	ANGLE
	FITNESS TEST	✓		PEDALS	COMFORT		HEART RATE VIA HANDSETS	✓
	TIME, DISTANCE, CALORIE	✓		DIMENSIONS	L 168 W 64 H 122 CM		ANALOG CHESTBELT CONNECTION	✓ 5.0 - 5.4 KHZ
				MAX. USER WEIGHT	135 KG		BLUETOOTH CHEST BELT CONNECTION	✓
							TRANSPORT WHEELS	ROBUST
							BLUETOOTH	✓
							APPS(ANDROID / IOS)	✓ TUNTURE ROUTER / BONHOLDS TRAINING KNOXMAP / ZIMPT
							TABLET SUPPORT	✓
							USE	HOME



SERIES

PERFORMANCE

TYPE

E50

MONITOR	DISPLAY TYPE	5.5 INCH COLOR LCD BACKLIGHT	GENERAL	BRAKE SYSTEM	PMS, SERVMOTOR	ERGONOMICS	ADJUSTABLE MONITOR	
	PROGRAMS TOTAL	21		FLYWHEELSYSTEM	11 KG		HANDLEBAR	MULTIGRIP (ADJUSTABLE)
		1 MANUAL 12 PRESET 4 HEART RATE 1 WATT 1 RECOVERY 1 BODY FAT(BMI) 1 USER		RESISTANCE	350 W		SEAT	COMFORT
	RESISTANCE LEVELS	32		ERGOMETER	✓		SEAT ADJUSTMENT	HORIZONTAL / HEIGHT
	WATT PROGRAM	✓ 10 - 350 PER 5 WATT		POWER SUPPLY	ADAPTER 9V/1A		HEART RATE VIA HANDSETS	✓
	FITNESS TEST	✓		PEDALS	COMFORT		ANALOG CHESTBELT CONNECTION	✓ 5.0 - 5.4 KHZ
	TIME, DISTANCE, CALORIE	✓		DIMENSIONS	L 99 W 60 H 158 CM		BLUETOOTH CHEST BELT CONNECTION	✓
				MAX. USER WEIGHT	135 KG		BOTTLE HOLDER	HOLDER + BOTTLE
							TRANSPORT WHEELS	ROBUST
							BLUETOOTH	✓
							APPS(ANDROID / IOS)	
							TABLET SUPPORT	✓
							USE	HOME





**iRelax**  
Rejuvenating Life

**AN EXQUISITE  
RELAXING MASSAGE  
EXPERIENCE**



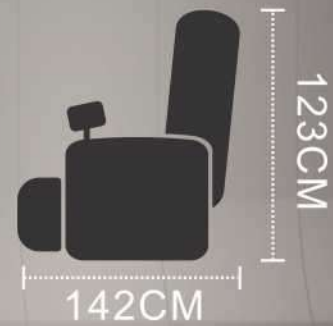
The **No.1** in Europe

# iRelax

Rejuvenating Life

## SL-A80

- 3D Technology Intelligent Massage
- Zero Wall
- Hip Swing
- Free Downloadable APP
- Fast-pairing Bluetooth
- Sole Roller Massage
- Shoulder 3 Width Switchable
- Negative ion Release
- S Contours Massage



3D Massage	Auto Modes	2 Memo Modes	LCD Controller	Zero Gravity
Arm Air Bag & Heating 18PCS	L Shape Arm Massage 4PCS	Zero Space 15CM	A Key to Translation 25CM	S Shape Long Rail 180CM
Massage Area on Back 31CM 19CM	Back Carbon Fibre Heater 40L	Width Adjustable on Back	Shoulder & Arm Massage 4PCS	Back Airbag 4PCS
Back Waist Twist	Waist Stretch	Swing Hip Function	Adjustable Shoulder 14cm	Bottock Airbag
Calf Airbag	Sole Airbag & Roller	Magnetic Therapy Function 10	Arthrosis Traction	Foot Extension 23CM
Head Cushion Adjustable 16CM	Armrest Disassembling	Negative Oxygen Ion 03	LED Light	Security Protection
Backrest & Calf Rise & Drop 110° 100°	MP3	Time Setting	Bluetooth Function	Program can be downloaded

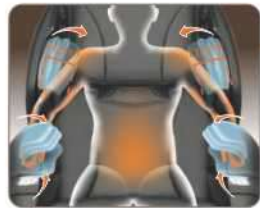
# iRelax

Rejuvenating Life

## SL-A80



Adjustable Shoulder



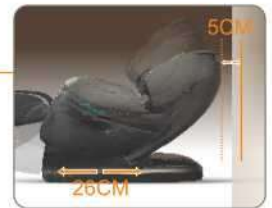
Back Carbon Fibre Heater



Sole Airbag & Guasha



L Shape Long Rail



Zero Space



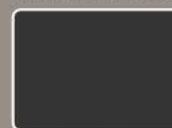
Security Protection



- Automatic Massage Program
- Memory Massage Program
- Manual Massage Program



AVAILABLE COLOR OPTIONS



BLACK

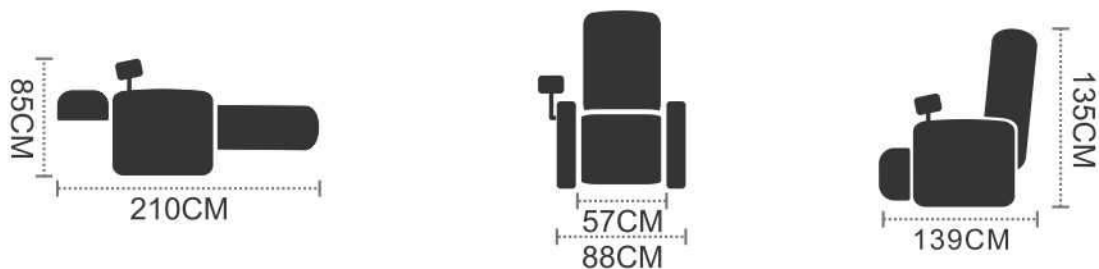


TAN

# iRelax

Rejuvenating Life

## SL-A701



3D Massage	A8 Auto Modes	M3 3 Memo Modes	Zero Gravity	90° 54° Backrest & Calf Rise and Drop
40°C 8PCS Arm Air Bag and Heating	4PCS L Shape Arm Massage	20.5CM 7.5CM Massage Area on Back	40°C Back Carbon Fibre Heater	Width Adjustable on Back
4PCS Shoulder And Arm Massage	4PCS Back Airbag	Back-waist Twist	Waist Stretch	Buttock Airbag
Arthrosis Traction	40°C Knee Heating	10PCS Calf Airbag	Sole Airbag and Roller	VFD Controller
23CM Foot Extension	USB charging point connected with speakers	Child Protection Safety lock	Time setting	10CM Head Cushion Adjustable

### AVAILABLE COLOR OPTIONS



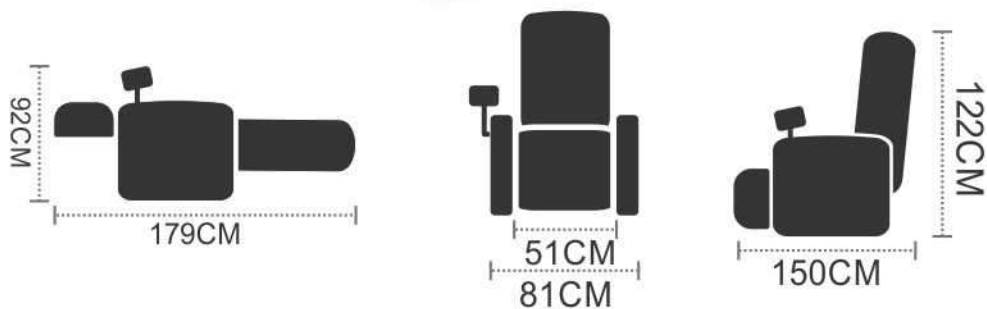
BLACK

BROWN

# iRelax

Rejuvenating Life

## SL-A389



2D Massage	A6 Auto Modes	M2 2 Memo Modes	LCD Controller
8PCS Arm Air Bag and Heating	4PCS L Shape Arm Massage	1.5CM Zero Space	22CM A Key To Translation
135cm L Shape Long Rail	21CM 103cm 113cm Massage Area on Back	Width Adjustable on Back	40°C Back Carbon Fibre Heater
14cm Adjustable Shoulder	Waist Stretch	Arthrosis Traction	Calf Airbag
16PCS Sole Airbag & GuaSha	3CM Sole Gua Sha	15CM Foot Extension	Zero Gravity
5CM Head Cushion Adjustable	90° 54° Backrest & Calf Rise and Drop	Security Protection	Armrest Disassembling

# iRelax

Rejuvenating Life

## SL-A229



2D Massage	A6 Auto Modes	2 Memo Modes	LCD LCD Controller
Arm Air Bag and Heating	Massage Area on Back	Width Adjustable on Back	Arthritis Traction
Head Cushion Adjustable	Buttock Airbag	Calf Airbag	Sole Airbag & GuaSha
Foot Extension	Foot Overtum	Arm Stretch	Magnetic Therapy Function
Backrest & Calf Rise and Drop	Time setting	Back Carbon Fibre Heater	Bluetooth Function

# iRelax

Rejuvenating Life

## SL-A150



2D Massage	VFD Controller	A3 Auto Modes	Massage Area on Back
Back Airbag	Width Adjustable on Back	Back, Buttock & Leg Vibration	Buttock Knocking
Swing Hip Function	L Shape Long Rail	Bluetooth Function	Remote Controller Pocket

# iRelax

Rejuvenating Life

## SL-C30A



LED Controller	3 Auto Mode	Legs Thermal Therapy	Calf Airbag
Sole Airbag & Heater	Calf Turnover	Magnetic Therapy Function	Angle Adjustment

# iRelax

Rejuvenating Life

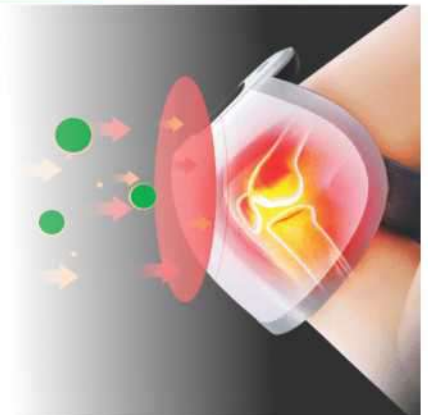
## SL-C130



# iRelax

Rejuvenating Life

## SL-C36



LCD Controller	3 Auto Mode	Eye Vibration
Ocular Pressure	Light Wave Heating	MP3

- SLEEK AND EASY TO USE
- NATURAL MAGNETS INSIDE THAT PROMOTES BLOOD CIRCULATION & RELIEVES KNEE PAIN
- WITH DIFFERENT LEVELS OF MASSAGE PRESSURE
- CARBON FIBRE INFRA-RED HEATER



# PushYourself

**VECTOR**   
— THE WINNING SPIRIT —

**TUNTURI**<sup>®</sup>

**iRelax**<sup>™</sup>  
— Rejuvenating Life —

**ZKCI**

 **milon**<sup>®</sup>

**CALIFORNIA**  
**FITNESS**

**VIVA**  
**BIKES**  
PUSH YOURSELF

  
**SPALDING**

 **DUNLOP**  
SPORT

**BODY LINE**  
Inspiring Fitness

**Corporate & Head Office**

14-D, Ballygunge Circular Road, (Opp. AAEL) Kolkata - 700019

Contact: 83550 68089 / 033 4007 2072

**Bhubaneswar Office**

501, Kharvela Nagar (1st Floor), Janpath, Bhubaneswar- 751001

Contact: 2380824 / 2380925

Email: [bodylinesports@gmail.com](mailto:bodylinesports@gmail.com) | Website: [bodylinesports.co.in](http://bodylinesports.co.in)