

BODY LINE

Inspiring Fitness
www.bodylinesports.co.in

VIVA
FITNESS

Push Yourself



**THOUGHTS
BECOME
THINGS**

www.vivafitness.net

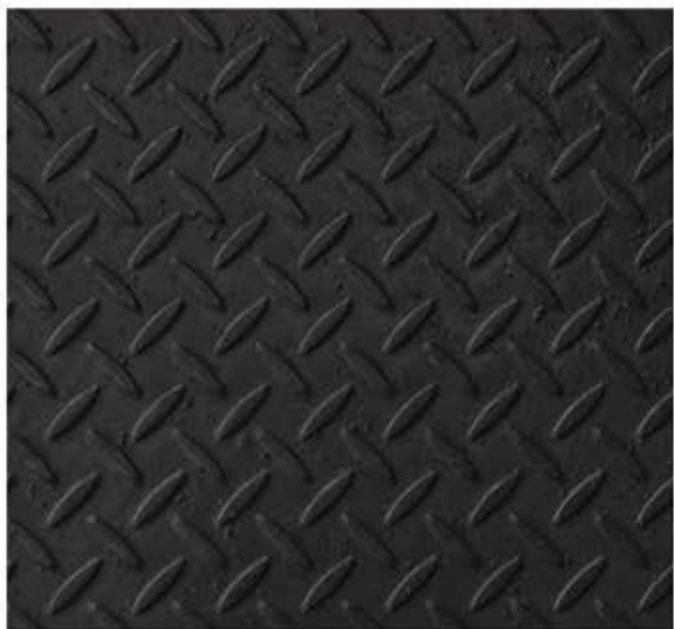


'Thoughts become things' when you leave the realm of average thinking and follow your dreams by applying the right decision, driven by your mind. Fitness is a 'state of mind', which needs constant trigger to put ones thought into action.

Every action needs a reason for accomplishing it. Staying fit manifests in the physicality and inner well-being which everyone aspires. Every time you make a resolve and step-up your fitness goals, life gets the better of you and positive thoughts lead to positive outcomes.

VIVA Fitness is an accomplished brand in the world of fitness equipment, designed both for commercial and home use. It thrives on the belief that with the right set of tools, a fitter person is better off in accomplishing his personal and professional goals.





X10

Commercial Treadmill

Specifications

- AC driving system with adjustable variable frequency.
- 4.0 HP AC continuous (8.0 HP Peak) motor.
- 23" x 62" running surface.
- Speed 0.8~20 kmph.
- Precise incline control from 0~18%
- Unique wireless phone charging deck
- 5 LED display with dot matrix showing time, speed, distance, incline, calories, heart rate, steps, pace & average speed .
- Direct speed & incline keys on the console.
- Various motivating programs for different workout requirements.
- Extra heavy duty steel base with double cell neoprene rubber system for excellent suspension.
- 1" thick fibre board running deck.
- Heavy duty reliable orthopaedic running belt.
- Large sized, twin cup holder with a built in tray to hold your mobile phone,
- With USB charging point.
- High speed O² generator.
- Emergency stop button.
- Sweat proof console design.
- Maximum user weight: 160 kg.
- LXWXH : 209X88X163 CM



X9

Commercial Treadmill

Specifications

- AC driving system with adjustable variable frequency
- 5.0 HP AC continuous (10.0 HP motor Peak)
- 21.5" x 60" running surface
- Speed : 1~20 km/h
- Precise incline control from 0~15%
- 6 LED display with dot matrix showing time, speed, distance, incline, calories, heart rate
- Direct speed & incline keys on the console
- Various motivating programs for different workout requirements
- Extra heavy duty steel base with double cell neoprene rubber system for excellent suspension
- 1" thick fibre board
- Heavy duty reliable orthopaedic running belt
- Large sized, twin cup holder with a built in tray to hold your mobile phone, MP3 and iPod
- Emergency stop button
- Sweat proof console design
- Maximum User Weight : 200Kgs
- LXWXH : 205X95X160 cms



T1900

Commercial Treadmill

Specifications

- AC driving system with adjustable variable frequency
- 5.0 HP AC continuous (10.0 HP motor Peak)
- 62" x 24" running surface
- Speed : 1~20 km/h
- Precise incline control from 0~20%
- 7 LED display with dot matrix showing time, speed, distance, incline, calories, heart rate
- Direct speed & incline keys on the console
- Various motivating programs for different workout requirements
- **Extra heavy duty steel base with double cell neoprene rubber system for excellent suspension**
- 1" thick fibre board
- Heavy duty reliable orthopaedic running belt
- Large sized, twin cup holder with a built in tray to hold your mobile phone, MP3 and iPod
- Emergency stop button
- Sweat proof console design
- Maximum User Weight : 200Kgs
- LXWXH : 205X95X160 cms



T1919

Commercial Treadmill

Specifications

- AC driving system provides higher torque of power for heavy loading
- 3.5 HP AC continuous (7.0 HP Peak) motor
- 23.6" x 63" running surface
- Speed 1~22 kmph
- Precise incline control from 0~15%
- Clear & luxurious design, 6 window LED display showing time, speed, incline, calories, distance, program & heart rate
- Various motivating programs for different workout requirements
- 6 PCS rubber cushion for excellent shock absorption that provides suitable push off to reduce the possibility of most of injury to knees and joints
- Heavy duty 2.5mm reliable orthopedic running belt
- MP3 connected with speakers, blue tooth music and Fit show App
- Sweat proof console design
- Two cup / bottle holders
- Maximum User Weight: 180 kgs
- LXWXH : 201X92X159 CM.





Q5 Commercial Treadmill

► Specifications

- AC driving system with adjustable variable frequency.
- 4.0 HP AC continuous (8.0 HP Peak) external roto motor with high heat performance.
- 23.6" x 63" running surface.
- Speed : 1-22 kmph.
- Precise incline control from 0-15%.
- 6LED+dot matrix display showing time, incline, calorie, distance and heart rate.
- Medical grade silicon keys with direct speed (3/6/9) & incline (4/8/12) on the console.
- Various motivating programs for different workout requirements: HRC, custom, manual, hill, fat burn, target, cardio, strength, fit test etc.
- Bluetooth music play.
- Sweat proof console design.
- Large sized, twin cup holder with a built-in tray to hold your mobile phone / tablet.
- Emergency stop button.
- Extra heavy duty running board supporting structure.
- Heavy duty reliable orthopaedic running belt.
- Maximum user weight : 180kg.
- LXWXH : 210×93×161 CM.

X8 Commercial Treadmill

► Specifications

- AC driving system with adjustable variable frequency.
- 3.0 HP AC continuous (6.0 HP Peak) motor.
- Speed : 1~20 kmph.
- Precise incline control from 0 ~15%.
- 21" x 58" running surface.
- Multi window display showing time, speed, distance, incline, calories & heart rate.
- Direct speed & incline keys on the console.
- Various motivating programs for different workout requirements.
- Double phenolic heavy cushioned deck for excellent shock absorption that provides suitable push off to reduce the possibility of any type of injury to knees and joints.
- Heavy duty reliable orthopedic running belt.
- Emergency stop button.
- Sweat proof console design.
- Two Mobile/Bottle Holders.
- Maximum User Weight : 150 Kgs.
- LXWXH : 216X92X151 CM.





OMEGA 5

Light Commercial Treadmill

► Specifications

- AC driving system with adjustable variable frequency
- 3.0 HP AC continuous (6.0 HP Peak) motor
- Speed : 1~18 kmph
- Precise incline control from 0 ~18%
- 20.5" x 60" running surface
- Multi window LED display showing time, speed, distance, incline, calories, heart rate etc.
- MP3 connectivity with speakers
- Various motivating programs for different workout requirements
- High speed O² generator.
- Heavy duty reliable orthopedic running belt
- Emergency stop button
- Sweat proof console design
- Two Mobile/Bottle Holders
- Maximum User Weight : 135 Kgs
- LXWXH : 200X86X150 CM



OMEGA 6

Light Commercial Treadmill

► Specifications

- AC driving system with adjustable variable frequency
- 3.0 HP AC continuous (6.0 HP Peak) motor
- Speed : 1~22 kmph
- Precise incline control from 0 ~15%
- 22" x 62" running surface
- Large LCD display showing time, speed, distance, incline, calories, heart rate etc.
- Various motivating programs for different workout requirements
- Heavy duty reliable orthopaedic running belt
- Emergency stop button
- High speed O² generator
- USB input and headphone jack available
- Sweat proof console design
- Two Mobile/Bottle Holders
- Maximum User Weight : 135 Kgs
- LXWXH : 197X89X142 CM.



T-940 Light Commercial Treadmill

► Specifications

- For light commercial and high end home use.
- 6 HP powerful AC Grade motor (3 HP continuous).
- Large LCD screen with blue back light.
- 24 preset programs, 1 manual and 3 user's manual.
- Speed : 1 ~ 24 kmph.
- Incline : 0 ~ 20%.
- Running surface : 23 x 60 inches.
- Readout : time, speed, distance, incline, calories and program.
- Mp3 system.
- Built in speakers.
- 8 piece high class suspension shock absorbing deck that protects the joints from injury and provide a good feeling while running.
- Heavy duty running belt.
- Maximum User Weight: 130 kg.

T-910 Motorized Treadmill

► Specifications

- For high end home use.
- 4 HP powerful AC motor (2 HP continuous).
- Speed :- 1 ~ 20 kmph.
- Incline : 0 ~15%.
- Running surface : 20 x 60 inches.
- 7" large LCD window that readouts : time, speed, distance, incline, calories and programs.
- Various workout programs to meet different user requirements.
- Instant speed and incline keys.
- Speakers to connect with Mp3 or Ipod.
- Innovative cushioning system.
- Heavy duty running belt.
- Cylinder provide hand free deck folding system.
- Easily foldable.
- Maximum User Weight 130 Kgs.



T-909 Motorized Treadmill

Specifications

- For high end home use
- 5 HP powerful AC motor (2.5 HP continuous)
- Speed Range : 1~20 kmph
- Power Incline : 0~15%
- Running surface : 20 x 60 inches
- 5" LCD window that readout : time, speed, distance, incline, calories & pulse
- Various workout programs, each is designed by certified personal trainers to help you run faster, loose weight & keep toned.
- Instant speed & incline keys on console
- Advance cushioning technology function.
- Heavy duty running belt
- MP3 with speaker
- Wheels for easy transportation
- Cylinder provides hand free deck folding system
- Easily foldable
- Maximum User Weight : 130 Kgs



T-445 Motorized Treadmill

Specifications

- 4.0 HP powerful AC motor (2.0 HP continuous)
- Speed Range : 1~18 kmph
- Power Incline : 0 ~ 18%
- Running surface : 19" x 54"
- Display : Large LCD blue back light
- Readout : time, speed, distance, incline, calories & pulse
- Various workout programs, each is designed by certified personal trainers to help you run faster, loose weight & keep toned.
- Instant speed & incline keys on console
- Innovative cushioning system
- Heavy duty running belt
- MP3 & USB function with speaker
- With built-in fan
- Wheels for easy transportation
- Cylinder provides hand free deck folding system
- Easily foldable
- Maximum User Weight : 130 Kgs





T-907 Motorized Treadmill

Specifications

- 5 HP powerful AC motor (2.5 HP continuous)
- Speed Range : 1~22 kmph
- Power Incline : 0~22%
- Running surface : 20 x 56 inches
- 5" LCD window that readout : time, speed, distance, incline, calories & pulse
- Various workout programs, each is designed by certified personal trainers to help you run faster, loose weight & keep toned.
- Instant speed & incline keys on console
- Advance cushioning technology function.
- Heavy duty running belt
- MP3 & USB connectivity with speaker
- Wheels for easy transportation
- Cylinder provides hand free deck folding system
- Easily foldable
- Maximum User Weight : 130 Kgs



T-905 Motorized Treadmill

Specifications

- 5 HP powerful AC motor (2.5 HP continuous)
- Speed Range : 1~18 kmph
- Power Incline : 0~18%
- Running surface : 20 x 59 inches
- Display : Large LCD blue back light
- Readout : time, speed, distance, incline, calories & pulse
- Various workout programs, each is designed by certified personal trainers to help you run faster, loose weight & keep toned.
- Instant speed & incline keys on console
- Innovative cushioning system
- Heavy duty running belt
- MP3 & USB function with speaker
- Wheels for easy transportation
- Cylinder provides hand free deck folding system
- Easily foldable
- Maximum User Weight : 130 Kgs



T-755 Motorized Treadmill

► Specifications

- 4 HP powerful AC motor (2 HP continuous).
- Speed Range : 1 – 18 kmph.
- Power Incline : 0 ~ 18%.
- Running Surface : 18 x 55 inches.
- Display : large LCD blue back light.
- Readout : time, speed, distance, incline, calories & pulse.
- Various workout programs, each is designed by certified . personal trainers to help you run faster, loose weight and keep toned.
- Instant speed and incline keys on console.
- Innovative cushioning system.
- Heavy duty running belt.
- MP3 & USB function with speaker.
- Wheels for easy transportation.
- Cylinder provides hand free deck folding system.
- Easily foldable.
- Maximum User Weight 130 Kgs.



T-752 Motorized Treadmill

► Specifications

- 4.0 HP powerful AC motor (2.0 HP continuous)
- Speed Range : 1~18 kmph
- Power Incline : 0 ~ 18%
- Running surface : 19x56 inches
- Display : Large LCD blue back light
- Readout : time, speed, distance, incline, calories & pulse
- Various workout programs, each is designed by certified personal trainers to help you run faster, loose weight & keep toned.
- Instant speed & incline keys on console
- Innovative cushioning system
- Heavy duty running belt
- MP3 function with speaker
- Wheels for easy transportation
- Cylinder provides hand free deck folding system
- Easily foldable
- Maximum User Weight : 120 Kgs

T-60 Motorized Treadmill

Specifications

- 4.5 HP powerful AC motor (2.25 HP continuous)
- Speed Range : 1~16 kmph
- Power Incline : 0 ~ 15%
- Running surface : 18×52 inches
- Display : Large LCD blue back light
- Readout : time, speed, distance, incline, calories & pulse
- Various workout programs, each is designed by certified personal trainers to help you run faster, loose weight & keep toned.
- Instant speed & incline keys on console
- Innovative cushioning system
- Heavy duty running belt
- MP3 function with speaker
- Wheels for easy transportation
- Cylinder provides hand free deck folding system
- Easily foldable
- Maximum User Weight : 120 Kgs



T-52 Motorized Treadmill

Specifications

- For high end home use
- 4.0 HP powerful AC motor (2.0 HP continuous)
- Speed Range : 0.1~16 kmph
- Power Incline: 1 ~ 15%
- Running surface : 18×52 inches
- Display : 5 inch LCD screen
- Readout : time, speed, distance, incline, calories & pulse
- Various workout programs, each is designed by certified personal trainers to help you run faster, loose weight & keep toned.
- Instant speed & incline keys on console
- Innovative cushioning system
- Heavy duty running belt
- MP3 function with speaker
- Wheels for easy transportation
- Cylinder provides hand free deck folding system
- Easily foldable
- Maximum User Weight : 120 Kgs



T-51 Motorized Treadmill

Specifications

- 4 HP powerful AC motor (2 HP continuous)
- Speed Range : 1~16 kmph
- 3 levels manual incline
- Running surface : 18" x 52"
- Display : 5" LCD screen
- Readout : time, speed, distance, incline, calories & pulse
- Various workout programs, each is designed by certified personal trainers to help you run faster, loose weight & keep toned.
- Instant speed key on console
- Innovative cushioning system
- Heavy duty running belt
- Speakers to connect with MP3
- Wheels for easy transportation
- Cylinder provides hand free deck folding system
- Easily foldable
- Maximum User Weight : 120 Kgs



T-99 Motorized Treadmill

Specifications

- 3 HP powerful AC motor (1.5 HP continuous).
- Speed Range : 1 – 14 kmph.
- 3 level manual incline.
- Running Surface : 17 x 48 inches.
- Display : LCD blue back light.
- Readout : time, speed, distance, incline, calories & pulse
- Various workout programs, each is designed by certified personal trainers to help you run faster, loose weight and keep toned.
- Instant speed key on console.
- Innovative cushioning system.
- Heavy duty running belt.
- MP3 & USB function with speaker.
- Wheels for easy transportation.
- Cylinder provides hand free deck folding system.
- Easily foldable.
- Maximum User Weight 100 Kgs.





T-810 Motorized Treadmill

Specifications

- DC Motor : 6 HP peak duty (3 HP continuous)
- Speed Range : 1 ~ 20 kmph
- Running surface : 20 x 60 inches
- Power incline : 0 ~ 15%
- Display : 1 large LCD window
- Programs : 12 programs with body fat tester
- Readout : speed, time, calories, distance, incline and pulse
- Speakers to connect with Mp3 or Ipod
- Speed and incline switch button on the handle bar
- Emergency stop button
- Wheels for transportation
- Heavy duty running belt
- Large cup holders
- Cylinder provide hand free deck folding down
- Foldable with locking system
- Easy installation
- Maximum User Weight 130 Kgs

T-440 Motorized Treadmill

Specifications

- DC Motor : 5 HP peak duty (2.5 HP continuous)
- Speed Range : 1 ~ 18 kmph
- Incline : 0 ~ 18%
- Running surface : 19 x 54 inches
- Display : Large LCD blue back light
- Readout : time, speed, distance, incline, calories & pulse
- Various workout programs, each is designed by certified personal trainers to help you run faster, loose weight & keep toned.
- MP3 & USB function with speaker
- With built-in fan
- Emergency stop button
- Wheels for transportation
- Heavy duty running belt
- Cylinder provide hand free deck folding down
- Foldable with locking system
- Easy installation
- Maximum User Weight 120 Kgs





T-425 Motorized Treadmill

► Specifications

- DC Motor : 4.5 HP peak duty (2.25 HP continuous)
- Speed Range : 1 ~ 16 kmph
- Incline : 0 ~ 18%
- Running surface : 18 x 53 inches
- Display : 1 large LCD window
- Readout : time, speed, distance, incline, calories & pulse
- Various workout programs, each is designed by certified personal trainers to help you run faster, loose weight & keep toned.
- MP3 & USB function with speaker
- With built-in fan
- Emergency stop button
- Wheels for transportation
- Heavy duty running belt
- Large cup holders
- Cylinder provide hand free deck folding down
- Foldable with locking system
- Easy Installation
- Maximum User Weight: 120 Kgs

T-255 Motorized Treadmill

► Specifications

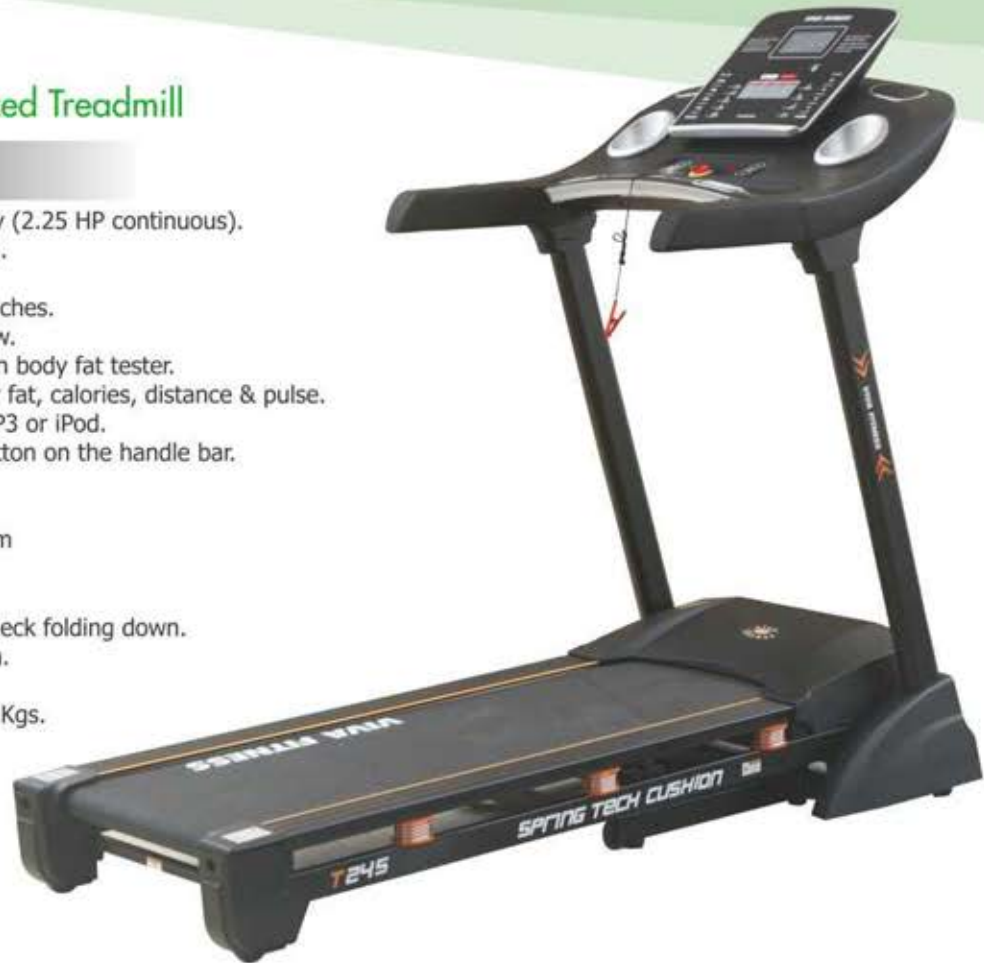
- DC Motor : 5 HP peak duty (2.5 HP continuous).
- Speed Range : 1 ~ 18kmph.
- Incline : 0 ~ 15%.
- Running surface : 18 x 56 inches.
- Display : 5" large LCD.
- Programs : 14 Programs with body fat tester.
- Readout : speed, time, body fat, calories, distance & pulse.
- Speakers to connect with MP3 or iPod.
- Speed and incline switch button on the handle bar.
- Emergency stop button.
- Wheels for transportation.
- Heavy duty running belt.
- Large cup holders.
- Cylinder provide hand free deck folding down.
- Foldable with locking system.
- Easy Installation.
- Maximum User Weight: 120 Kgs.



T-245 Motorized Treadmill

Specifications

- DC Motor : 4.5 HP peak duty (2.25 HP continuous).
- Speed Range : 1 ~ 18 kmph.
- Incline : 0 ~ 15%.
- Running surface : 17 x 51 inches.
- Display : 5 large LCD window.
- Programs : 12 Programs with body fat tester.
- Readout : speed, time, body fat, calories, distance & pulse.
- Speakers to connect with MP3 or iPod.
- Speed and incline switch button on the handle bar.
- Emergency stop button.
- Wheels for transportation.
- Innovative cushioning system
- Heavy duty running belt.
- Large cup holders.
- Cylinder provide hand free deck folding down.
- Foldable with locking system.
- Easy Installation.
- Maximum User Weight: 115 Kgs.



T146 Motorized Treadmill

Specifications

- DC Motor : 4.5 HP peak duty (2.25 HP continuous)
- Speed Range : 1 ~ 16 kmph
- Incline : 0 ~ 15%
- Running surface : 18 x 52 inches
- Display : 1 large LCD window
- Various workout programs, each is designed by certified personal trainers to help you run faster, loose weight & keep toned.
- Readout : speed, time, body fat, calories, distance & pulse
- Speakers to connect with MP3
- Speed and incline switch button on the handle bar
- Emergency stop button
- Wheels for transportation
- Heavy duty running belt
- Large cup holders
- Cylinder provide hand free deck folding down
- Foldable with locking system
- Easy Installation
- Maximum User Weight: 115 Kgs





T-240 Motorized Treadmill

Specifications

- DC Motor: 4.5 HP peak duty (2.25 HP continuous).
- Speed Range: 1 ~ 16 kmph.
- Incline : 0 ~ 15%.
- Running surface 17 x 51 inches.
- Display: 1 large LCD window.
- Programs: 12 Programs with body fat tester.
- Readout : speed, time, calories, distance, incline & pulse.
- Speakers to connect with MP3 or iPod.
- Speed and incline switch button on the handle bar.
- Emergency stop button.
- Wheels for transportation.
- Heavy duty running belt.
- Large cup holders.
- Cylinder provide hand free deck folding down.
- Foldable with locking system.
- Easy Installation.
- Maximum User Weight 115 Kgs.



T-406 Motorized Treadmill

Specifications

- DC Motor : 3.5 HP peak duty (1.75 HP continuous)
- Speed Range : 1 ~ 14 kmph.
- Incline : 0~15%.
- Running surface : 17 x 50 inches
- Display : 5" LCD screen with blue backlight
- Various workout programs which is designed by certified personal trainers.
- Readout : speed, time, calories, incline, distance & pulse.
- Speed & incline switch buttons on handle bars.
- Innovative cushion system.
- Emergency stop button.
- MP3 Function with speaker.
- Wheels for transportation.
- Heavy duty running belt.
- Large cup holders.
- Cylinder provide hand free deck folding down. Foldable with locking system.
- Easy Installation.
- Maximum User Weight: 100 Kgs



T-471 Motorized Treadmill

Specifications

- DC Motor : 3.5 HP peak duty (1.75 HP continuous)
- Speed Range : 0.8 ~ 14 kmph.
- Incline : 0~15%.
- Running surface : 16 x 48 inches
- Display : 5 large LCD window
- Programs : P1 ~ P9
- Readout : speed, time, calories, distance & pulse.
- Speakers to connect with Mp3 or Ipod.
- Speed switch buttons on handle bars.
- Emergency stop button.
- Wheels for transportation.
- Heavy duty running belt.
- Large cup holders.
- Cylinder provide hand free deck folding down.
- Foldable with locking system.
- Easy Installation.
- Maximum User Weight: 100 Kgs



T-430 Motorized Treadmill

Specifications

- DC Motor : 5 HP peak duty (2.5 HP continuous)
- Speed Range : 1 ~ 18 kmph
- Incline : 3 level manual
- Running surface : 19 x 54 inches
- Display : 1 large LCD window
- Readout : time, speed, distance, incline, calories & pulse
- Various workout programs, each is designed by certified personal trainers to help you run faster, loose weight & keep toned.
- MP3 & USB function with speaker
- With built-in fan
- Emergency stop button
- Wheels for transportation
- Heavy duty running belt
- Large cup holders
- Cylinder provide hand free deck folding down
- Foldable with locking system
- Easy Installation
- Maximum User Weight: 120 Kgs



T-415 Motorized Treadmill

Specifications

- DC Motor : 4.5 HP peak duty (2.25 HP continuous)
- Speed Range : 1 ~ 16 kmph
- Incline : 3 level manual
- Running surface : 18 x 53 inches
- Display : 1 large LCD window
- Readout : time, speed, distance, incline, calories & pulse
Various workout programs, each is designed by certified personal trainers to help you run faster, loose weight & keep toned.
- MP3 & USB function with speaker
- With built-in fan
- Emergency stop button
- Wheels for transportation
- Heavy duty running belt
- Large cup holders
- Cylinder provide hand free deck folding down
- Foldable with locking system
- Easy Installation
- Maximum User Weight: 120 Kgs



T-165 Motorized Treadmill

Specifications

- DC Motor: 5 HP peak duty (2.5 HP continuous).
- Speed Range: 0.8 ~ 18 kmph.
- Incline : 3 level manual.
- Running surface 18 x 54 inches.
- Display: 1 large LCD window.
- Programs: P1 ~ P15, U1 ~ U3.
- Readout : speed, time, body fat, calories, distance & pulse.
- Speakers to connect with MP3.
- Speed and stop switch button on the handle bar.
- Emergency stop button.
- Wheels for transportation.
- Step counting function.
- Heavy duty running belt.
- Large cup holders.
- Cylinder provide hand free deck folding down.
- Foldable with locking system.
- Easy Installation.
- Maximum User Weight 120 Kgs.



T-145 Motorized Treadmill

Specifications

- DC Motor : 4.5 HP peak duty (2.25 HP continuous)
- Speed Range : 1 ~ 16 kmph
- Incline : 3 level manual
- Running surface : 18 x 52 inches
- Display : 1 large LCD window
- Various workout programs, each is designed by certified personal trainers to help you run faster, loose weight & keep toned.
- Readout : speed, time, body fat, calories, distance & pulse
- Speakers to connect with MP3
- Speed and incline switch button on the handle bar
- Emergency stop button
- Wheels for transportation
- Heavy duty running belt
- Large cup holders
- Cylinder provide hand free deck folding down
- Foldable with locking system
- Easy Installation
- Maximum User Weight: 115 Kgs



T131 Motorized Treadmill

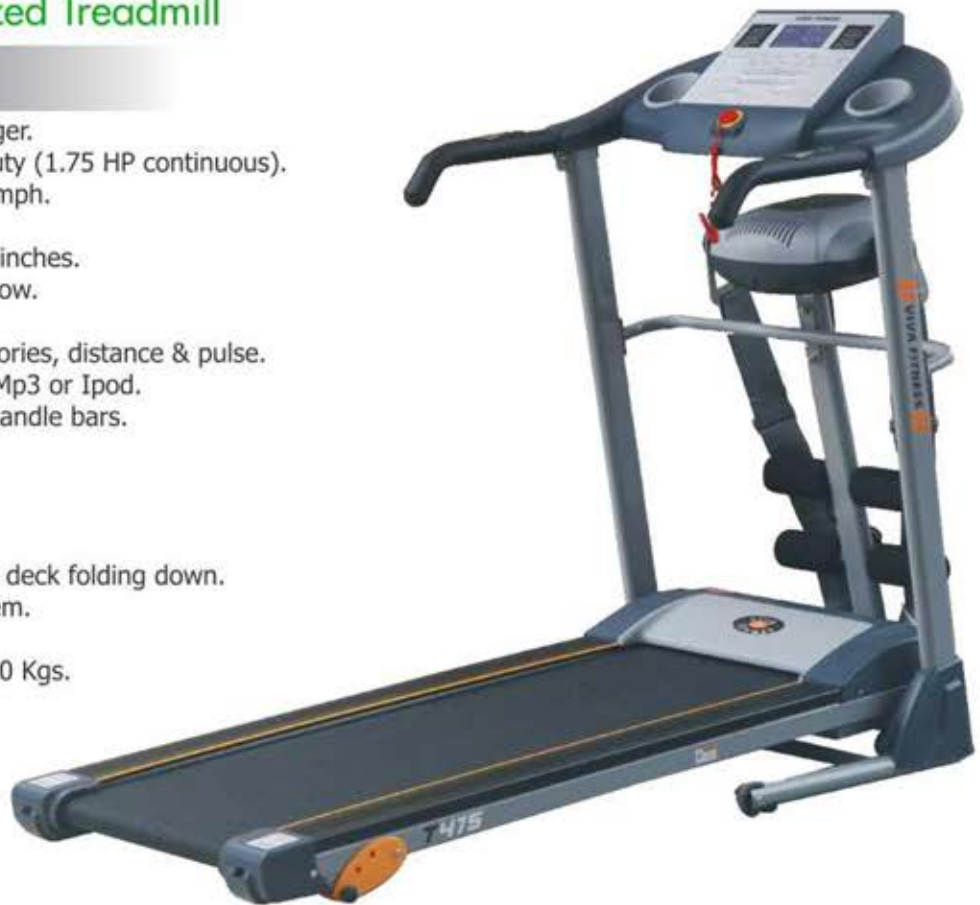
Specifications

- DC Motor : 4 HP peak duty (2 HPcontinuous)
- Speed range : 1~12 kmph
- Incline : 3 level manual
- Running surface 17 x 50 inches
- Display : 5 window led
- Programs : P1-P9 + body fat
- Readout : speed, time, distance, calories, body fat and pulse
- Speaker to connect with MP3
- Speed switch buttons on handle bar
- Emergency stop button
- Wheels for transportation
- Heavy duty running belt
- Large cup holders
- Cylinder provide hand free deck folding down
- Foldable with locking system
- Easy installation
- Maximum user weight 100 kgs

T-475 Motorized Treadmill

Specifications

- Multi Function with Massager.
- DC Motor : 3.5 HP peak duty (1.75 HP continuous).
- Speed Range : 0.8 ~ 14 kmph.
- Incline : 3 level manual.
- Running surface : 16 x 48 inches.
- Display : 5 large LCD window.
- Programs : P1 ~ P9.
- Readout : speed, time, calories, distance & pulse.
- Speakers to connect with Mp3 or Ipod.
- Speed switch buttons on handle bars.
- Emergency stop button.
- Wheels for transportation.
- Heavy duty running belt.
- Large cup holders.
- Cylinder provide hand free deck folding down.
- Foldable with locking system.
- Easy Installation.
- Maximum User Weight: 100 Kgs.



T-405 Motorized Treadmill

Specifications

- DC Motor : 3.5 HP peak duty (1.75 HP continuous)
- Speed Range : 1 ~ 14 kmph.
- Incline : 3 level manual
- Running surface : 17 x 50 inches
- Display : 5" LCD screen with blue backlight
- Various workout programs which is designed by certified personal trainers.
- Readout : speed, time, calories, distance & pulse.
- Speed switch buttons on handle bars.
- Innovative cushion system.
- Emergency stop button.
- MP3 Function with speaker.
- Wheels for transportation.
- Heavy duty running belt.
- Large cup holders.
- Cylinder provide hand free deck folding down. Foldable with locking system.
- Easy Installation.
- Maximum User Weight: 100 Kgs.



T-470 Motorized Treadmill

Specifications

- DC Motor : 3.5 HP peak duty (1.75 HP continuous).
- Speed Range : 0.8 ~ 14 kmph.
- Incline : 3 level manual.
- Running surface : 16 x 48 inches.
- Display : 5 large LCD window.
- Programs : P1 ~ P9.
- Readout : speed, time, calories, distance & pulse.
- Speakers to connect with Mp3 or Ipod.
- Speed switch buttons on handle bars.
- Emergency stop button.
- Wheels for transportation.
- Heavy duty running belt.
- Large cup holders.
- Cylinder provide hand free deck folding down.
- Foldable with locking system.
- Easy Installation.
- Maximum User Weight: 100 Kgs.





E200 Commercial Elliptical

► Specifications

- LED dot matrix console readouts: TIME, DISTANCE, CALORIES, PULSE, SPEED / RPM, LEVEL, WATT, FAN etc.
- Various motivating programs for different workout requirements.
- Level Control : 24 resistance levels.
- Dual Technology - resistance with both magnetic and air.
- 520mm x 240mm unique stride length.
- 8 kgs flywheel.
- Both forward & reverse motions offer various workout options.
- Hand held pulse sensors enable to monitor the heart rate all times.
- With ipad holder & bottle cage.
- Unique durable floor levelers on front & rear stabilizer.
- Transport wheels on the front stabilizer, providing easy movement to move the items.
- With adaptor power system.
- Maximum user weight : 150 kg.
- LXWXH : 162X65X180 CM.



KH-630 Light Commercial Elliptical

► Specifications

- 20" long stride.
- 24 Level resistance.
- 0-15% manual incline.
- 5" LCD display readouts : Time, Distance, RPM, Speed, Calories, Pulse and Watts.
- Multiple programs available.
- Handheld pulse sensor.
- With adapter power system.
- Transport wheels.
- Adjustable floor levelers.
- Maximum User Weight : 130 Kgs.
- LXWXH : 172X72X164 CM.

KH-610

Light Commercial Elliptical

► Specifications

- 20" long stride.
- 3 section manual incline.
- Blue backlight LCD display.
- Readouts: Time, speed, distance, calories, pulse, watt, program, bodyfat (height/weight/age) and level.
- Multiple programs including 1 Manual, 4 HRC, 1 Watt,
- 11 preset, 4 Users and 3 Fitness test.
- Handheld pulse sensor.
- Magnetic flywheel.
- With adapter power system.
- Resistance level - 24.
- Transport wheels.
- Adjustable floor levelers.
- Maximum User Weight: 130kgs.
- LXWXH : 176X68X179 CM



KH-595

Light Commercial Elliptical

► Specifications

- Front Drive with long handle arms enabling smooth and engaging exercise regardless your fitness level
- With 3 level manual incline
- 20" Long stride length for different user heights
- Auto scan advanced computer with blue back-lit screen
- Display Readouts : time, distance, RPM, speed, level, calories pulse & watts
- Magnetic brake with V-belt drive system
- With 7 kg flywheel
- With 3 pcs hidden crank system
- 16 levels tension control system
- Multiple programs, including 1 manual, 2 HRC, 1 body fat & 2 user set
- Hand held pulse sensor
- With adapter power system
- Transport wheels
- Adjustable floor levellers
- Maximum user weight : 130kgs
- LXWXH : 173X66X170 CM





KH-580 Light Commercial Elliptical

► Specifications

- 18" long stride.
- Adjustable swing bar.
- LCD display readouts : Time, Distance, RPM, Speed, Calories, Pulse and Watts.
- Multiple programs including 1 Manual, 4 HRC, 3 Goal and 5 Users.
- Handheld pulse sensor.
- 30 cm fly wheel.
- Motor magnetic 24 level resistance.
- Transport wheels.
- Adjustable floor levelers.
- With adaptor power system.
- Maximum User Weight : 130 Kgs.

KH-960 Light Commercial Elliptical

► Specifications

- 20" long stride length with 2 levels of adjustment.
- Adjustable swing bar.
- Display readouts : Time, Distance, RPM, Speed, Calories, Pulse, Body ratio, BMI, BMR and Temperature.
- Handheld pulse sensor.
- 10 kgs fly wheel.
- Magnetic 8 level manual tension control system.
- Transport wheels.
- Adjustable floor levelers.
- Maximum User Weight : 130 Kgs.





**Self
Generating**

KH-813 Programable Magnetic Elliptical

Specifications

- Ergometer Magnetic Elliptical.
- 8 Kgs flywheel with outer magnetic system.
- 3 pcs crank for smooth functioning.
- Three level stride adjustment with pedals.
- Digital coloured screen showing time, rpm, speed, distance, calories, pulse, recovery and body fat.
- Digital Tension Control System.
- 1 manual and 12 programs.
- Transport wheels.
- Maximum User Weight 120 Kgs.

KH-653 Magnetic Elliptical

Specifications

- 8 Kg magnetic wheel with two way system
- 15 level manual Tension Control System
- Computer display for speed, time, distance, temperature, odo, pulse & calories
- With hand pulse
- Smooth & silent belt transmission
- With wheels for easy movement.
- Max User Weight 120 Kgs



KH-736 Magnetic Elliptical

Specifications

- Assembled with "universal Pivot Joint" for crank axle.
- Computer display for time, speed, distance, pulse, cal, rpm, scan, pulse recovery.
- 15 level manual tension control.
- 8 kgs. Two ways, flat belt, disk crank.
- Manual adjustable stride length.
- With hand pulse.
- Transport wheels.
- Maximum User Weight 120 kgs.



KH-265 Magnetic Elliptical

Specifications

- Assembled with 'Universal Pivot Joint' for crank axle.
- Computer display for speed, time, distance & calories.
- 8 level Tension Control System
- 3 racing games integrated in the computer display.
- G1 to G4 training modes available.
- With wheels for easy movement.
- With adjustable seat.
- Adjusting caps for uneven floor.
- TUV / GS approved.
- With hand pulse and body fat.
- Max User Weight 110 Kgs.

KH-735 Magnetic Elliptical

► Specifications

- Assembled with 'Universal Pivot Joint' for crank axle.
- Computer display for speed, time, distance and calories.
- 8 level Tension Control System.
- 3 racing games integrated in the computer display.
- G1 to G4 training modes available.
- With wheels for easy movement.
- Adjusting caps for uneven floor.
- TUV / GS approved.
- With hand pulse and body fat.
- Maximum User Weight 110 Kgs.



KH-80201 Magnetic Elliptical

► Specifications

- Assembled with 'Universal Pivot Joint' for crank axle.
- Automatically adjust the tolerance of disk running.
- Computer display for speed, time, distance, calories and room temperature.
- 6 Kg fly wheel with inner magnetic system.
- 8 level Tension Control System.
- With wheels for easy movement.
- Adjusting caps for uneven floor.
- TUV / GS approved.
- With hand pulse and body fat.
- Maximum User Weight 100 Kgs.



KH-70201

Magnetic Elliptical

Specifications

- Assembled with 'Universal Pivot Joint' for crank axle.
- Automatically adjust the tolerance of disk running.
- Computer display for speed, time, distance, calories and room temperature.
- 6 Kg fly wheel with magnetic system.
- 8 level Tension Control System.
- With wheels for easy movement.
- Adjusting caps for uneven floor.
- TUV / GS approved.
- With hand pulse and body fat.
- Maximum User Weight 100 Kgs.



KH-66

Magnetic Elliptical

Specifications

- Assembled with 'Universal Pivot Joint' for crank axle
- Large LCD display for speed, time, distance & calories
- 8 level Tension Control System
- With 4 kg flywheel
- Belt driven with magnetic resistance system
- With wheels for easy movement
- With adjustable seat
- Adjusting caps for uneven floor
- With hand pulse
- Max User Weight : 100 Kgs.



KH-65

Magnetic Elliptical

Specifications

- Assembled with 'Universal Pivot Joint' for crank axle
- Large LCD display for speed, time, distance & calories
- 8 level Tension Control System
- With 4 kg flywheel
- Belt driven with magnetic resistance system
- With wheels for easy movement
- Adjusting caps for uneven floor
- With hand pulse
- Max User Weight : 100 Kgs.



KH-350

Metallic Double Burner

Specifications

- Orbitrek with seat and hand pulse.
- Luxurious design with steel wheel for smooth working.
- Brake system for tension control.
- Additional handle support in front.
- Can be used as a cycle or cross-trainer.
- Computer display for hand pulse, time, speed, distance and calories.
- Adjustable handle bars for varying heights.
- Max User Weight : 100 Kgs.



KH-235

Metallic Double Burner

Specifications

- Orbitrek with seat and hand pulse.
- Luxurious design with steel wheel for smooth working.
- Brake system for tension control.
- 6 Kg fly wheels.
- Can be used as a cycle or cross-trainer.
- Computer display for hand pulse, time, speed, distance and calories.
- Adjustable handle bars for varying heights.



KH-300

Fashion Double Burner

Specifications

- Orbitrek with seat and hand pulse.
- Luxurious design with transparent chain cover.
- Additional handle support in front.
- Can be used as a cycle or cross-trainer.
- Computer display for hand pulse, time, speed, distance and calories.
- Adjustable handle bars for varying heights.



KH-200

Double Burner

Specifications

- Orbitrek with seat.
- Can be used as a cycle or cross-trainer.
- Computer display for time, speed, distance & calories.
- Micro adjustable tension control.
- Adjustable handle bars for varying heights.



KH-195

Double Burner

Specifications

- Orbitrek with seat.
- Can be used as a cycle or cross-trainer.
- Computer display for time, speed, distance & calories.
- Micro adjustable tension control.
- Adjustable handle bars for varying heights.



KH-1040

Light Commercial Recumbent Bike

Specifications

- LED display showing Pulse, Recovery, Time, RPM, Speed, Distance, Calories, Watt, Heart Rate and Resistance.
- With self generator system.
- 12 programs, including 1 manual, 4 HRC, 2 test, 1 recovery and 4 user.
- Magnetic brake with V-belt drive system.
- 16 levels tension control system.
- Ergonomic seat adjustment.
- With heart rate receiver.
- Hand grips with pulse sensors.
- Counter balance pedals.
- With bottle holder.
- Adjustable PU seat.
- Transport wheels.
- Maximum user weight : 140 kg
- LXWXH : 163X65X152 CM.



KH-812

Programable Magnetic Recumbent Bike

Specifications

- Ergometer Magnetic Recumbent Bike.
- 7 Kgs flywheel with outer magnetic system.
- 3 pcs crank for smooth functioning.
- Digital coloured screen showing time, rpm, speed, distance, calories, pulse, recovery, body fat.
- Adjustable seat that suits different heights.
- Reclinable back seat for more comfort.
- Digital Tension Control System.
- One manual and 12 programs.
- Maximum User Weight 120 Kgs.



KH-652

Magnetic Recumbent Bike

Specifications

- 7 Kg Flywheel
- 15 level Tension Control System
- Computer display for speed, time, distance, calories, odo and pulse
- With wheels for easy movement
- Adjusting cap for uneven floor
- Deluxe big seats
- Max. User Weight 125 Kgs



KH-725

Magnetic Recumbent Bike

Specifications

- 6 Kg fly wheel.
- 8 level Tension Control System.
- Computer display for speed, time, distance, calories, RPM and pulse.
- 3 racing games integrated in the computer display.
- G1 to G4 training modes available.
- With wheels for easy movement.
- Adjusting cap for uneven floor.
- TUV / GS approved.
- Maximum User Weight 110 Kgs.



KH-724 Magnetic Recumbent Bike

► Specifications

- 6 Kg fly wheel.
- 8 level Tension Control System.
- Computer display for speed, time, distance, calories, RPM and pulse.
- With wheels for easy movement.
- Adjusting cap for uneven floor.
- TUV / GS approved.
- Maximum User Weight 110 Kgs.



KH-704 Magnetic Recumbent Bike

► Specifications

- 6 Kg fly wheel with inner magnetic system.
- 8 level Tension Control System.
- Computer display for speed, time, distance, calories and pulse.
- Health Index : Pulse recovery and Body fat analyze.
- With wheels for easy movement.
- Adjusting cap for uneven floor.
- TUV / GS approved.
- Maximum User Weight 100 Kgs.

KH-703

Magnetic Recumbent Bike

Specifications

- 6 Kg fly wheel with inner magnetic system.
- 8 level Tension Control System.
- Computer display for speed, time, distance, calories and pulse.
- Health Index : Pulse recovery and Body fat analyze.
- With wheels for easy movement.
- Adjusting cap for uneven floor.
- TUV / GS approved.
- Maximum User Weight 100 Kgs.



KH-64

Magnetic Recumbent bike

Specifications

- Magnetic flywheel system
- 8 level manual Tension Control System
- Large LCD display for speed, time, distance, calories and pulse
- With 4kg flywheel
- Adjustable handle bar with hand pulse
- Max. User Weight 100 Kgs



KH-1020

Light Commercial Upright Bike

Specifications

- LED display showing Pulse, Recovery, Time, RPM, Sp Watt, Heart Rate and Resistance.
- With self generator system.
- 12 programs: 4 HRC, 3 goal, 1 recovery and 4 user.
- Magnetic brake with V-belt drive system.
- 16 levels tension control system.
- With heart rate receiver.
- Hand grips with pulse sensors.
- Counter balance pedals.
- With bottle holder.
- PU seat with adjustable height.
- Transport wheels.
- User weight : 140 kg.
- LXWXH : 105X56X152 CM.



KH-190 Magnetic Bike

Specifications

- 8 Kg fly wheel with inner magnetic system.
- 1 manual and 3 programs.
- 8 level Tension Control System.
- Computer display for speed, time, distance, calories, recovery and body fat.
- With hand pulse.
- With wheels for easy movement.
- Adjustable seat height for different users.
- Adjusting caps for uneven floor.
- TUV / GS Approved.
- 3 pcs. Crank / Axle System.
- Maximum User Weight 120 Kgs.



KH-448 Magnetic Bike

► Specifications

- 8 Kg fly wheel with magnetic system
- 8 level Tension Control System
- Computer display for speed, time, distance, pulse, temperature & calories
- 3 pcs advance crank system
- With hand pulse
- With wheels for easy movement
- Adjustable seat height for different users
- Adjusting caps for uneven floor
- Max. User Weight 120 Kgs

KH-715 Magnetic Bike

► Specifications

- 6 Kg fly wheel with magnetic system.
- 8 level Tension Control System.
- Computer display for speed, time, distance, pulse, RPM, temperature & calories.
- 3 pcs advance crank system
- With hand pulse.
- With wheels for easy movement.
- Adjustable seat height for different users.
- Adjusting caps for uneven floor.
- TUV / GS Approved.
- Maximum User Weight 110 Kgs.



KH-795 Magnetic Bike

Specifications

- 6 Kg fly wheel with magnetic system.
- 8 level Tension Control System.
- Computer display for speed, time, distance & calories.
- With hand pulse.
- With wheels for easy movement.
- Adjustable seat height for different users.
- Adjusting caps for uneven floor.
- TUV / GS Approved.
- Maximum User Weight 110 Kgs.



KH-63 Magnetic Bike

Specifications

- Magnetic flywheel system
- 8 level manual Tension Control System
- Large LCD display for speed, time, distance, calories and pulse
- With 4kg flywheel
- Adjustable handle bar with hand pulse
- Max. User Weight 100 Kgs



KH-62 Magnetic Bike

Specifications

- Magnetic flywheel system
- 8 level manual Tension Control System
- Large LCD display for speed, time, distance, calories and pulse
- With 4kg flywheel
- Vertical & Horizontal seat adjustment
- Handle bar with hand pulse
- Max. User Weight 100 Kgs



KH-555 Magnetic Bike

Specifications

- 5 Kg fly wheel.
- 8 level tension control system.
- Computer display for speed, time, distance and calories.
- With hand pulse.
- Handle bar adjustment
- With wheels for easy movement.
- Both way adjustable seat for different user.
- Adjusting caps for uneven floor.
- TUV / GS Approved.
- Maximum User Weight 100 Kgs.



KH-550 Magnetic Bike

Specifications

- 5 Kg fly wheel.
- 8 level tension control system.
- Computer display for speed, time, distance and calories.
- With hand pulse.
- With wheels for easy movement.
- Adjustable seat height for different users.
- Adjusting caps for uneven floor.
- TUV / GS Approved.
- Maximum User Weight 100 Kgs.



KH-442 X Bike

Specifications

- Magnetic wheel with two ways system.
- 8 Level Tension Control System.
- Computer display for speed, time, distance & calories.
- PU saddle with backpack
- Smooth & silent belt transmission.
- With wheels for easy movement.
- Adjustable seat height for different users.
- Max User Weight 100 Kgs.



KH-445 Magnetic Bike

Specifications

- Magnetic wheel with two ways system.
- 8 Level Tension Control System.
- Computer display for speed, time, distance, pulse & calories.
- With Hand Pulse.
- Smooth & silent belt transmission.
- With wheels for easy movement.
- Adjustable seat height for different users.
- Max User Weight 100 Kgs.



KH-245 Air Bike

Specifications

- Micro-adjustable tension.
- Computer display for speed, pulse, time, distance and calories.
- Adjustable seat height for different users.
- Pedal with strap.



CULTBIKE X1

Commercial Group Bike



KH-153

Spin Bike

Specifications

- Can be used for clubs.
- Adjustable resistance.
- Dipping handle bar.
- Ultra sturdy structure with 20 kgs CNC flywheel.
- With adjustable seat.
- Computer functions : time, speed, distance, calories & pulse.
- Maximum User Weight 140 Kgs.



KH-152

Spin Bike

Specifications

- Sturdy structure with 21 kgs stainless steel fly wheels.
- Adjustable resistance.
- Dipping handle bar.
- With adjustable seat.
- With bottle holder, without bottle.
- Computer functions : time, speed, distance, calories & pulse.
- Maximum User Weight 120 Kgs.



KH-140

Spin Bike

Specifications

- Sturdy structure with stainless steel fly wheel.
- Adjustable seat.
- Adjustable and ergonomic handle bar assist the most comfortable sitting.
- Resistance levels : Variable.
- Computer display for showing time, distance, speed & RPM.
- SPD racing pedals.
- Transport wheels for easy movement.
- Maximum User Weight 100 Kgs



218-MG

Light Commercial Multi Gym

► Specifications

- Innovative design and ideal for corporate & society use
- Multi station gym with 1 steel weight stacks of 90 Kgs.
- Multiple Exercise Function – Seated bench press, Row, Pull down, Chest clamp, Tricep push down, Standing abdominal curl, Leg extension, Standing leg curl, Standing bicep curl, Golf, Arm extension, Front raise & Shrugs.
- Durable powder coated finish
- Comfortable seat pads
- Arc cover for protection



KH-325 Deluxe Home Gym

► Specifications

- High end home gym with durable powder coated finish.
- 220 LBS weight plates with metal cover.
- Contoured deep padded seat and back rest.
- Functions : Chest press, Pec fly, Leg extension, Lat pull down & Bicep curl.
- With lat pull bar and ankle strap.



OPTIONAL

Leg Press
Attachment

OPTIONAL

Power Tower
And
Bench Attachment

KH-316 Deluxe Home Gym

Specifications

- High end home gym with unique feature of bench press.
- 200 LBS weight plates with metal cover.
- 60mm x 1.5mm oval tubular steel frame.
- With adjustments in most of the seats and handles.
- Heavy upholstery with high density foam padding.



KH-4700 Home Gym

Specifications

- Home Gym with preacher curl.
- With push up bars.
- With situp bench.
- 130 LBS PVC weights with metal cover.
- Heavy 50mm x 50mm square tubular steel frame.



KH-313 Home Gym

Specifications

- Home Gym with weight cover.
- 150 LBS PVC weights.
- 60mm x 1.5mm oval tubular steel frame.
- With abdominal strap.



KH-312 Home Gym

Specifications

- Home Gym without weight cover.
- 150 LBS PVC weights.
- 60mm x 1.5mm oval tubular steel frame.
- With abdominal strap.



X50 **PORTABLE SQUAT STAND**

Specifications

- Can be used as both for squats & bench press exercises.



X75 **FID BENCH**

Specifications

- Heavy duty frame structure.
- Options of flat, incline & decline position.
- Can be used for multiple exercises.



X100 **MULTI PURPOSE BENCH**

Specifications

- Flat, incline & decline position
- With preacher curl attachment
- With leg extension & prone leg curl



X200 PLATE LOADED STRENGTH TRAINER

Specifications

- DIMENSIONS : 175X170X220 CMS
- MAXIMUM WEIGHT LOADING CAPACITY : 120 KGS



X400 WALL MOUNTED FOLDABLE SQUAT RACK

Specifications

- DIMENSIONS : 115X138X230 CMS
- MAXIMUM WEIGHT LOADING CAPACITY : 200 KGS



X500 **HALF RACK**

Specifications

- DIMENSIONS : 126X180X232 CMS
- MAXIMUM WEIGHT LOADING CAPACITY : 200 KGS



X600 **FUNCTIONAL RACK WITH LONG PULL**

Specifications

- DIMENSIONS : 154X170X232 CMS
- MAXIMUM WEIGHT LOADING CAPACITY : 120 KGS



X900 FTSM

► Specifications

- FUNCTIONAL TRAINER CUM SMITH MACHINE
- DIMENSIONS : 205X147X232 CMS
- WEIGHT STACK OF 80 KG X 2
- MAXIMUM WEIGHT LOADING CAPACITY : 200 KGS



SAVAGE

► Specifications

- FUNCTIONAL TRAINER CUM SMITH MACHINE CUM MULTI GYM
- DIMENSIONS : 180X219X227 CMS
- WEIGHT STACK OF 100 KG X 2
- MAXIMUM WEIGHT LOADING CAPACITY : 200 KGS



VX-3600

Olympic Weight Bench

Specifications

- Olympic Weight Bench.
- Flat / Incline / Decline positions.
- Adjustable incline for barbell set holder and seat.
- Padded rollers and seat for maximum comfort.
- Adjustable seat.
- Maximum User Weight 120 Kgs.



VX-3500

Olympic Weight Bench

Specifications

- Olympic Weight Bench.
- Adjustable incline for barbell set holder and seat.
- Padded rollers and seat for maximum comfort.
- Adjustable seat.
- Maximum User Weight 100 Kgs.



VX-3400

Adjustable Bench

Specifications

- Flat / incline / decline position
- Leg extension / curl
- Maximum user weight 90 kgs



VX-203a

Adjustable Utility Bench

Specifications

- Ideal exercise for building and tightening upper / lower body and abdominal muscles.
- Adjustable incline and decline.
- Padded seat for maximum comfort.



KH-295 Multi Plate Rack

► Specifications

- Sturdy Design.



KH-215 3 TIER DUMBBELL RACK

► Specifications

- Sturdy Design.
- Made from Heavy Duty Cast Iron angles.
- Can hold upto 8-10 pairs of dumbbell.



KH-216 3 IN 1 STORAGE RACK

► Specifications

- Sturdy Design.
- Made from Heavy Duty Cast Iron angles.
- Can hold upto 8-10 pairs of dumbbell.
- Can store weight plates and 4 barbells.



KH-218 Dumbbell Rack

► Specifications

- Made from Heavy Duty Cast Iron angles.
- Can hold 10 pairs of Dumbbells.



VX-102 SIT-UP BENCH

► Specifications

- Ideal exercise for building and tightening abdominal muscles.
- Adjustable inclination.
- Padded roller and seat for maximum comfort.



RUBBER COATED VIVA POWER FIXED BARBELLS WITH STRAIGHT AND CURL HANDLE BAR

- Made from high grade virgin rubber for long life.
- Dia 30mm and length 100cm.
- Tear proof, soundless & bouncy effect.

AVAILABLE SIZES
KGS
10
15
20
25
30
35
40



VIVA THERMO POWER SOLID DUMBBELLS

- Made from high grade thermoplastic rubber (TPR) for long life.
- Tear proof, soundless & bouncy effect.



AVAILABLE SIZES
KGS
2.5
5
7.5
10
12.5
15
17.5
20
22.5
25
30
35
40
45
50

VIVA POWER SOLID DUMBBELL

- Made from high grade virgin rubber for long life.
- Tear proof, soundless & bouncy effect.



AVAILABLE SIZES
KGS
2.5
5
7.5
10
12.5
15
17.5
20
22.5
25
27.5
30
35
40
45
50

VIVA FORCE DUMBBELLS

- Made from rubber for long life.
- Tear proof, soundless & bouncy effect.



AVAILABLE SIZES
KGS
2.5
5
7.5
10
12.5
15
17.5
20
22.5
25
30
35
40

BLUE CIRCLED DUMBBELLS

- Made from rubber for long life.
- Tear proof, soundless & bouncy effect.



AVAILABLE SIZES
KGS
2.5
5
7.5
10
12.5
15
17.5
20
22.5
25
30
35
40

HEXAGON DUMBBELL

- Made from rubber for long life.
- Tear proof, soundless & bouncy effect.



AVAILABLE SIZES
KGS
2.5
5
7.5
10
12.5
15
17.5
20
25

COLOURED BUMPER PLATES

- Made from high quality rubber.

AVAILABLE SIZES
KGS
5
10
15
20
25



BLACK BUMPER PLATES

- Made from high quality rubber.



AVAILABLE SIZES
KGS
5
10
15
20
25

VIVA FITNESS TPR OLYMPIC HOLE PLATES

- Made from high grade thermoplastic rubber for long life.
- Tear proof, soundless & bouncy effect.



AVAILABLE SIZES
KGS
1.25
2.5
5
7.5
10
15
20
25

VIVA FORCE OLYMPIC HOLE PLATES

- Made from high grade virgin rubber for long life.
- Tear proof, soundless & bouncy effect



AVAILABLE SIZES
KGS
1.25
2.5
5
7.5
10
15
20
25

VIVA POWER RUBBER PLATES

- Available in both olympic & 29 mm hole
- Tear proof, soundless & bouncy effect.



AVAILABLE SIZES
KGS
1.25
2.5
5
7.5
10
15
20
25

NEOPRENE KETTLE BELL



AVAILABLE SIZES
KGS
2
4
8
12
16
20
24
28
32

IR94088

STRONGMAN THICK BARBELL

- Unique 50 mm grip bar
- Hard chrome tempered alloy steel
- Max loading : 1600 lbs
- 7.2 ft olympic length.
- Net weight : 20 kgs.



IR101

COMPETITION OLYMPIC BAR

- Net weight : 20 kgs.
- 7.2 ft olympic length.
- Flexible barbell made from heat treated Spring Steel.
- High quality nickel chrome finish.
- Comes with 2 bronze bush & 4 needle bearing.
- Shaft diameter : 28mm.
- Sleeve diameter : 50mm.
- Shaft length : 51.5"
- Sleeve length : 15.2"
- Max. load capacity : 907 kg / 2000 Lbs.



IR105

POWER LIFTING BAR

- Net weight : 20 kgs.
- 7.2 ft olympic length.
- Flexible barbell made from heat treated Spring Steel.
- High quality nickel chrome finish.
- Comes with 2 bronze bush & 4 needle bearing.
- Shaft diameter : 28mm.
- Sleeve diameter : 50mm.
- Shaft length : 51.5"
- Sleeve length : 15.2"
- Max. load capacity : 816 kg / 1800 Lbs.



IR104

HEAVY LIFTING BAR

- Net weight : 20 kgs.
- 7.2 ft olympic length.
- Made from heat treated alloy steel.
- High quality nickel chrome finish.
- Comes with 2 bronze bush.
- Shaft diameter : 30mm.
- Sleeve diameter : 50mm.
- Shaft length : 53"
- Sleeve length : 15.2"
- Max. load capacity : 816 kg / 1800 Lbs.



IR94039

HEAVY DUTY OLYMPIC BAR

- Net weight : 20 kgs.
- 7.2 ft olympic length.
- Made from carbon steel.
- High quality nickel chrome finish.
- Shaft diameter : 30mm.
- Sleeve diameter : 50mm.
- Sleeve length : 14"
- Max. load capacity : 816 kg / 1800 Lbs.



IR94038

OLYMPIC BAR

- Net weight : 16 kgs.
- 7.2 ft olympic length.
- Made from carbon steel.
- High quality nickel chrome finish.
- Shaft diameter : 28mm.
- Sleeve diameter : 50mm.
- Sleeve length : 14"



IR94052

72" OLYMPIC BAR

- Net weight : 13 kgs.
- High quality nickel chrome finish.
- Shaft diameter : 28mm.
- Sleeve diameter : 50mm.
- Sleeve length : 11".



IR94051

60" OLYMPIC BAR

- Net weight : 11 kgs.
- High quality nickel chrome finish.
- Shaft diameter : 28mm.
- Sleeve diameter : 50mm.
- Sleeve length : 10".



IR94048

48" OLYMPIC BAR

- Net weight : 10 kgs.
- High quality nickel chrome finish.
- Shaft diameter : 28mm.
- Sleeve diameter : 50mm.
- Sleeve length : 8".



IR94047

47" EZ CURL BAR

- Net weight : 10 kgs.
- High quality nickel chrome finish.
- Shaft diameter : 28mm.
- Sleeve diameter : 50mm.
- Sleeve length : 8".



IR102

MULTI GRIP BAR

- Size : 2.2 meter



IR94083

56" OLYMPIC BAR



IR94045

OB20" OLYMPIC BAR



IR94025

14" REGULAR RUBBER
HANDLE HOLLOW BAR

• Matches our small hole rubber plates



IR94046

OLYMPIC TRICEP BAR



IR94065

OLYMPIC BAR COLLAR (STEEL)



IR94064

OLYMPIC BAR COLLAR (PLASTIC)



IR95069

NYLON LAT ROPE



IR94061

COLLAR



IR95017

38" SOLID LAT BAR



IR95015

48" SOLID LAT BAR



IR95021



IR95020

20" SOLID LAT BAR



IR95023



IR95022



IR95025



IR95019



IR95029



IR95028



IR103

ROPE TRAINER

- Unique cardio workout
- Adjustable resistance control



IR95024



IR95026



IR94084



IR94089

OLYMPIC BAR PIVOT



IR94090

T BAR HANDLE



POUND PAD



TUNTURI®



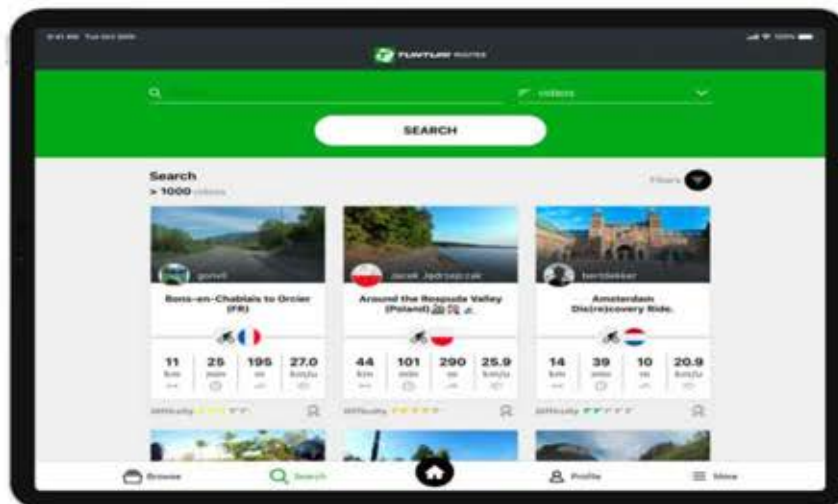
**INTRODUCING
TUNTURI ROUTES APP
For all our
cardio equipment**

**Explore the
World from
Home**



Explore the world from home

Do you want to check out your holiday destination or do you wish to cycle or run through the famous Central Park in New York City? This is possible with Tunturi Routes. Make use of the videos users have uploaded all around the world. The resistance of your cardio equipment will sync automatically with the elevation changes in the video. It's like you are there...



Choose from 50,000+ videos

Never get bored on your cardio trainer again. The platform offers you 50,000+ videos you can choose to play. The videos are from places all over the world, from the United States to Australia and everything in between.



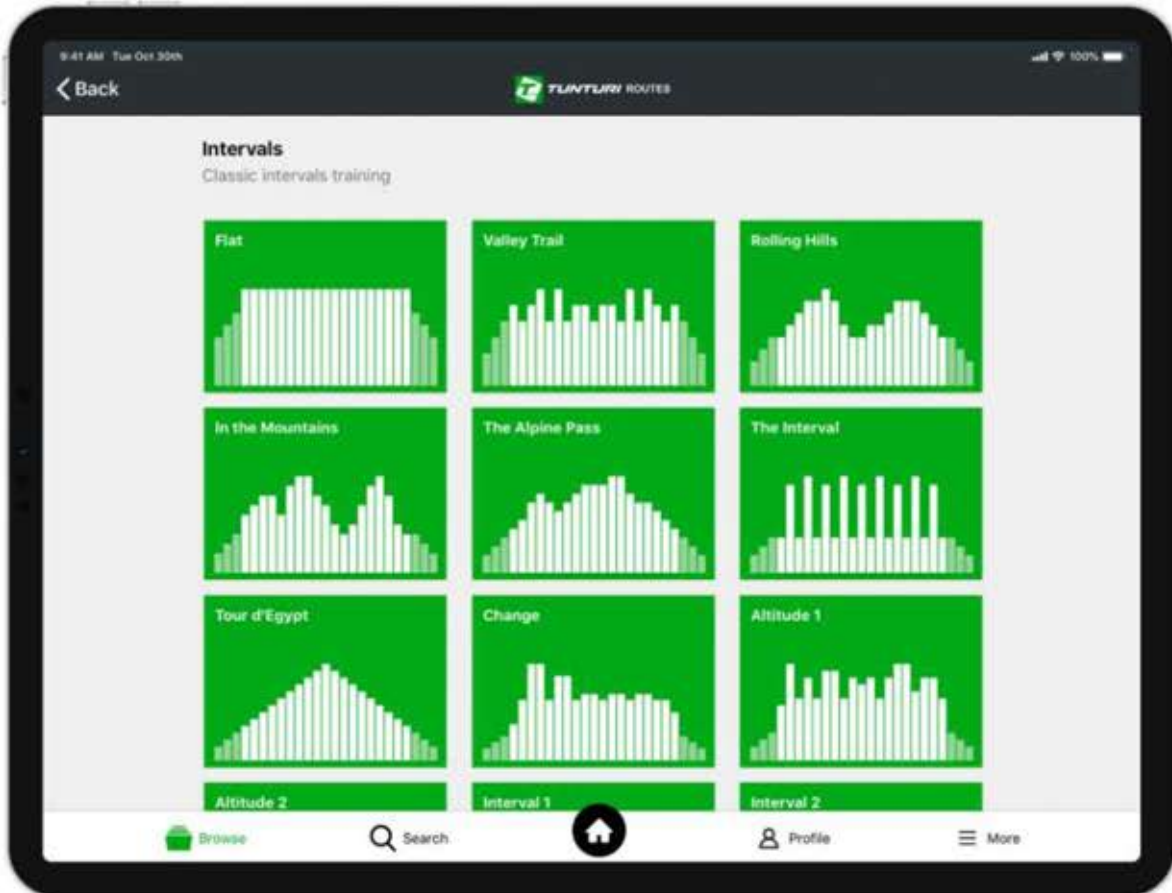
Cycle, cross and run at your own level

Is cycling up the Alpe 'D Huez on your bucket list, but still far out of reach? You can easily adjust the difficulty of video, which makes it possible for you to conquer mountains at your own level. Is the road ahead not challenging enough, increase the level of difficulty and challenge yourself.



Follow coaching classes from home

Do you know spin classes? A room full of sweaty people on spinning bikes accompanied by loud music? Coaches around the world have uploaded their coaching lessons on the platform, so you can follow the instructions of the coach from the comfort of your own home.



Expand your training profiles

Doesn't your cardio trainer have enough training programs? No worries! Tunturi Routes offers a lot more training programs to do interval training. Start an interval training profile you like and decide yourself how long it takes.

SERIES	ENDURANCE
TYPE	T90



MONITOR	DISPLAY TYPE	10 INCH LCD BACKLIGHT + 4 LED (GRAPHICAL PROFILES)	ERGONOMICS	RUNNING BELT / PROFILE	1.8 MM / CROSS TIP
	PROGRAMS TOTAL	44		HANDGRIP CONTROL SPEED/INCLINE	✓
		36 PRESET 3 USER 1 QUICK START 1 BODY FAT 1 DISTANCE COUNTDOWN 1 CALORIES COUNTDOWN 1 TIME COUNTDOWN		FRONT HANDLEBAR	✓
	TIME, DISTANCE, CALORIE	✓		HEART RATE VIA HANDSETS	✓
				ANALOG CHESTBELT CONNECTION	✓ 5.0 - 5.4 KHZ
				BLUETOOTH CHEST BELT CONNECTION	✓ VIA APP
				BOTTLE HOLDER	✓
				TRANSPORT WHEELS	✓
				BLUETOOTH	✓
				USB CHARGER	✓
				APPS (ANDROID / IOS)	(TUNTURI ROUTES / ANYRUN / KINOMAP)
				TABLET SUPPORT	✓
				STEP COUNTER	✓
				USE	LIGHT COMMERCIAL
GENERAL	MOTOR	5 HP AC	EXTRA		
	SPEED	0.8 - 24 KM/H			
	INCLINE	15			
	RUNNING SURFACE	W 55 x L 153 CM			
	RUNNING DECK TYPE	21 MM			
	FOLDABLE	✓ SOFT DROP			
	SHOCK ABSORBING	T-FLEX COMFORT TOP			
	MAX USER WEIGHT	150 KG			


SERIES	ENDURANCE
TYPE	T80



MONITOR	DISPLAY TYPE	10 INCH LCD BACKLIGHT + 4 LED (GRAPHICAL PROFILES)	ERGONOMICS	RUNNING BELT / PROFILE	1.8 MM / CROSS TIP
	PROGRAMS TOTAL	44		HANDGRIP CONTROL SPEED/INCLINE	✓
		36 PRESET 3 USER 1 QUICK START 1 BODY FAT 1 DISTANCE COUNTDOWN 1 CALORIES COUNTDOWN 1 TIME COUNTDOWN		FRONT HANDLEBAR	✓
	TIME, DISTANCE, CALORIE	✓		HEART RATE VIA HANDSETS	✓
				ANALOG CHESTBELT CONNECTION	✓ 5.0 - 5.4 KHZ
				BLUETOOTH CHEST BELT CONNECTION	✓ VIA APP
				BOTTLE HOLDER	✓
				TRANSPORT WHEELS	✓
			EXTRA	BLUETOOTH	✓
				USB CHARGER	✓
				APPS (ANDROID / IOS)	(TUNTURI ROUTES / ANYRUN / KINOMAP)
				TABLET SUPPORT	✓
				STEP COUNTER	✓
				USE	LIGHT COMMERCIAL
GENERAL	MOTOR	5.5 HP DC			
	SPEED	0.8 - 22 KM/H			
	INCLINE	15			
	RUNNING SURFACE	W 55 x L 153 CM			
	RUNNING DECK TYPE	21 MM			
	FOLDABLE	✓ SOFT DROP			
	SHOCK ABSORBING	T-FLEX COMFORT TOP			
	MAX USER WEIGHT	150 KG			

SERIES	PERFORMANCE
TYPE	T50



MONITOR	DISPLAY TYPE	4 LED + 400M TRACK	ERGONOMICS	RUNNING BELT / PROFILE	1.6 MM / SAND
	PROGRAMS TOTAL	 44		HANDGRIP CONTROL SPEED/INCLINE	✓
		36 PRESET 3 USER 1 QUICK START 1 BODY FAT 1 DISTANCE COUNTDOWN 1 CALORIES COUNTDOWN 1 TIME COUNTDOWN		FRONT HANDLEBAR	✓
	TIME, DISTANCE, CALORIE	✓		HEART RATE VIA HANDSETS	✓
				ANALOG CHESTBELT CONNECTION	✓ 5.0 - 5.4 KHZ
				BLUETOOTH CHEST BELT CONNECTION	✓ VIA APP
				BOTTLE HOLDER	✓
				TRANSPORT WHEELS	✓
			EXTRA	BLUETOOTH	✓
				USB CHARGER	✓
				APPS (ANDROID / IOS)	TUNTURI ROUTES / ANYRUN / KINOMAP
				TABLET SUPPORT	✓
				STEP COUNTER	✓
				USE	HOME
GENERAL	MOTOR	4.5 HP DC			
	SPEED	1.0 - 20 KM/H			
	INCLINE	15			
	RUNNING SURFACE	W 50 x L 140 CM			
	RUNNING DECK TYPE	18 MM			
	FOLDABLE	✓ SOFT DROP			
	SHOCK ABSORBING	T-FLEX COMFORT PLUS			
	MAX USER WEIGHT	135 KG			

SERIES

COMPETENCE

TYPE

T40



MONITOR	DISPLAY TYPE	10 INCH LCD BACKLIGHT + 4 LED (GRAPHICAL PROFILES)	ERGONOMICS	RUNNING BELT / PROFILE	1.4 MM / DIAMOND
	PROGRAMS TOTAL	44		HANDGRIP CONTROL SPEED/INCLINE	✓
		36 PRESET 3 USER 1 QUICK START 1 BODY FAT 1 DISTANCE COUNTDOWN 1 CALORIES COUNTDOWN 1 TIME COUNTDOWN		HEART RATE VIA HANDSETS	✓
	TIME, DISTANCE, CALORIE	✓		ANALOG CHESTBELT CONNECTION	✓ 5.0 - 5.4 KHZ
				BLUETOOTH CHEST BELT CONNECTION	✓ VIA APP
GENERAL	MOTOR	3.5 HP DC	EXTRA	BOTTLE HOLDER	✓
	SPEED	1.0 - 16 KM/H		TRANSPORT WHEELS	✓
	INCLINE	12		BLUETOOTH	✓
	RUNNING SURFACE	W 45 x L 125 CM		USB CHARGER	✓
	RUNNING DECK TYPE	12 MM		APPS (ANDROID / IOS)	(TUNTURI ROUTES / ANYRUN / KNOMAP)
	FOLDABLE	✓ SOFT DROP		TABLET SUPPORT	✓
	SHOCK ABSORBING	T-FLEX COMFORT		STEP COUNTER	✓
	MAX USER WEIGHT	120 KG		USE	HOME

iRelax
Rejuvenating Life

**AN EXQUISITE
RELAXING MASSAGE
EXPERIENCE**



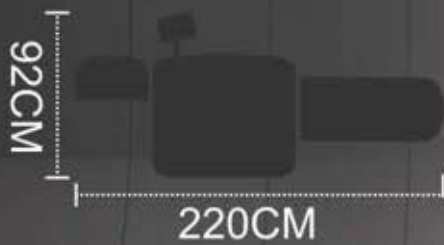
The **No.1** in Europe

iRelax

Rejuvenating Life

SL-A80

- 3D Technology Intelligent Massage
- Zero Wall
- Hip Swing
- Free Downloadable APP
- Fast-pairing Bluetooth
- Sole Roller Massage
- Shoulder 3 Width Switchable
- Negative ion Release
- S Contours Massage



3D Massage	Auto Modes	2 Memo Modes	LCD Controller	Zero Gravity
Arm Air Bag & Heating	L Shape Arm Massage	Zero Space	A Key to Translation	S Shape Long Rail
Massage Area on Back	Back Carbon Fibre Heater	Width Adjustable on Back	Shoulder & Arm Massage	Back Airbag
Back Waist Twist	Waist Stretch	Swing Hip Function	Adjustable Shoulder	Bottock Airbag
Calf Airbag	Sole Airbag & Roller	Magnetic Therapy Function	Arthrosis Traction	Foot Extension
Head Cushion Adjustable	Armrest Disassembling	Negative Oxygen Ion	LED Light	Security Protection
Backrest & Calf Rise & Drop	MP3	Time Setting	Bluetooth Function	Program can be downloaded

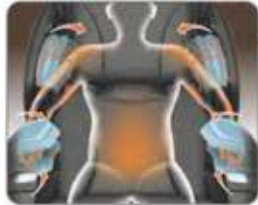
iRelax

Rejuvenating Life

SL-A80



Adjustable Shoulder



Back Carbon Fibre Heater



Sole Airbag & Guasha



L Shape Long Rail



Zero Space



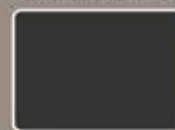
Security Protection



- Automatic Massage Program
- Memory Massage Program
- Manual Massage Program



AVAILABLE COLOR OPTIONS

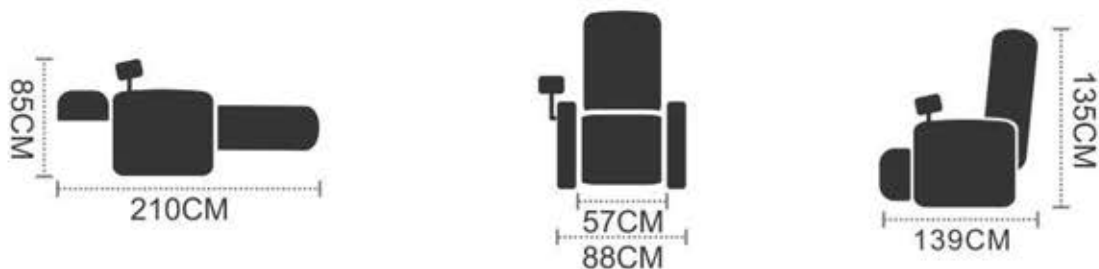


BLACK



TAN

iRelax
Rejuvenating Life
SL-A701



3D Massage	Auto Modes	3 Memo Modes	Zero Gravity	Backrest & Calf Rise and Drop
Arm Air Bag and Heating	L Shape Arm Massage	Massage Area on Back	Back Carbon Fibre Heater	Width Adjustable on Back
Shoulder And Arm Massage	Back Airbag	Back-waist Twist	Waist Stretch	Buttock Airbag
Arthrosis Traction	Knee Heating	Calf Airbag	Sole Airbag and Roller	VFD Controller
Foot Extension	USB charging point connected with speakers	Child Protection Safety lock	Time setting	Head Cushion Adjustable

AVAILABLE COLOR OPTIONS



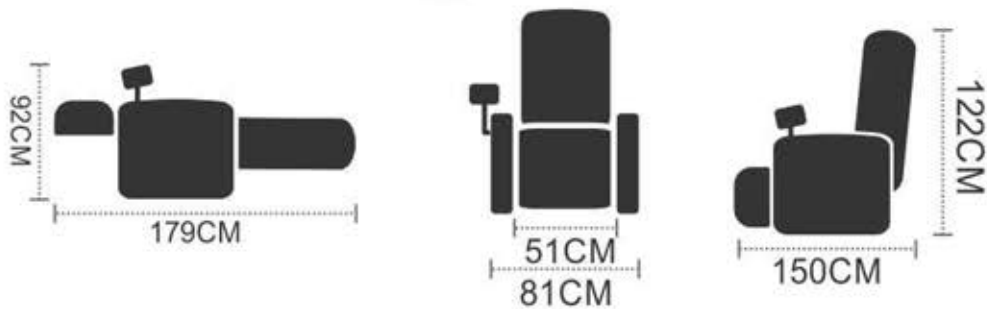
BLACK

BROWN

iRelax

Rejuvenating Life

SL-A389



2D Massage	A6 Auto Modes	M2 2 Memo Modes	LCD Controller
8PCS Arm Air Bag and Heating	4PCS L Shape Arm Massage	15CM Zero Space	22CM A Key To Translation
L Shape Long Rail	21CM 19CM Massage Area on Back	Width Adjustable on Back	40% Back Carbon Fibre Heater
14cm Adjustable Shoulder	Waist Stretch	Arthrosis Traction	Calf Airbag
Sole Airbag & GuaSha	3CM Sole Gua Sha	15CM Foot Extension	Zero Gravity
5CM Head Cushion Adjustable	Backrest & Calf Rise and Drop	Security Protection	Armrest Disassembling

iRelax

Rejuvenating Life

SL-A229



 2D Massage	 A6 Auto Modes	 M2 2 Memo Modes	 LCD Controller
 8PCS Arm Air Bag and Heating	 73CM Massage Area on Back	 Width Adjustable on Back	 Arthrosis Traction
 10CM Head Cushion Adjustable	 Buttock Airbag	 Calf Airbag	 Sole Airbag & GuaSha
 15CM Foot Extension	 Foot Overturn	 Arm Stretch	 4 Magnetic Therapy Function
 90° Backrest & Calf Rise and Drop	 Time setting	 40% Back Carbon Fibre Heater	 Bluetooth Function

AVAILABLE COLOR OPTIONS



BLACK

BEIGE

iRelax
 Rejuvenating Life
SL-A150



 2D Massage	 VFD Controller	 Auto Modes	 Massage Area on Back
 Back Airbag	 Width Adjustable on Back	 Back, Buttock & Leg Vibration	 Buttock Knocking
 Swing Hip Function	 L Shape Long Rail	 Bluetooth Function	 Remote Controller Pocket

iRelax
 Rejuvenating Life
SL-C30A



10^{PCS}
Leg Airbag

36^{PCS}
Calf Airbag

46^{PCS}
Total airbag

9^{PCS}
Total Valve

1^{PCS}
Airbag number

Design with Top section can turn over
Seated and Enjoy the Knee comfortable massage

LED Controller

3 Auto Mode

55°C
Legs Thermal Therapy

Calf Airbag

Sole Airbag & Heater







180°
Calf Turnover

4
Magnetic Therapy Function

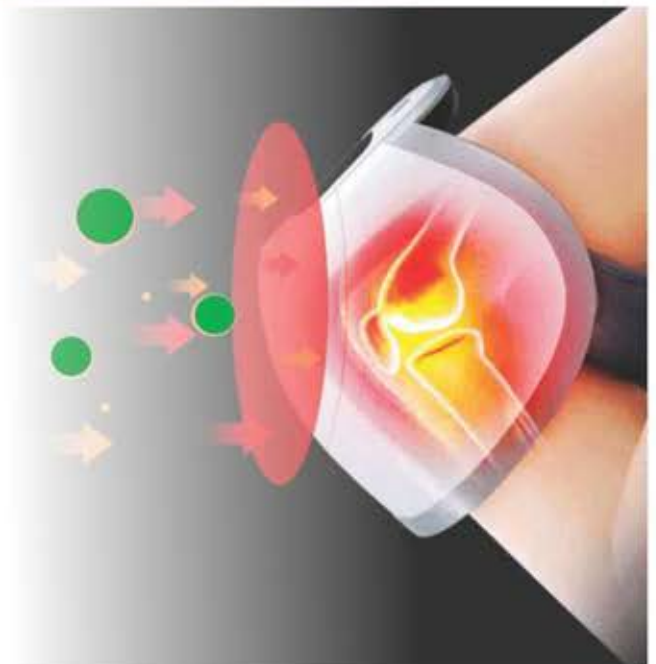
110°
Angle Adjustment

iRelax
Rejuvenating Life
SL-C130



 LCD Controller	 3 Auto Mode	 Eye Vibration
 Ocular Pressure	 Light Wave Heating	 MP3

iRelax
Rejuvenating Life
SL-C36



- SLEEK AND EASY TO USE
- NATURAL MAGNETS INSIDE THAT PROMOTES BLOOD CIRCULATION & RELIEVES KNEE PAIN
- WITH DIFFERENT LEVELS OF MASSAGE PRESSURE
- CARBON FIBRE INFRA-RED HEATER



Scan for downloading
the complete catalogue



#PushYourself

VECTOR X
THE WINNING SPIRIT

TUNTURI

iRelax
Rejuvenating Life

SPALDING

DUNLOP
SPORT

CALIFORNIA
FITNESS

VIVA
BIKES
PUSH YOURSELF

Slazenger

VIVA
SPORTS

BODY LINE

Inspiring Fitness

Corporate & Head Office

14-D Ballygunge Circular Road (opp. AAEL) Kolkata 700 019

Contact: 83550 68089 / 033 4007 2072

Bhubaneswar Office:

501 Kharvela Nagar (1st floor), Janpath Bhubaneswar 751 001

Contact: 2380824 / 2380925

E mail: bodylinesports@gmail.com | Website: bodylinesports.co.in